

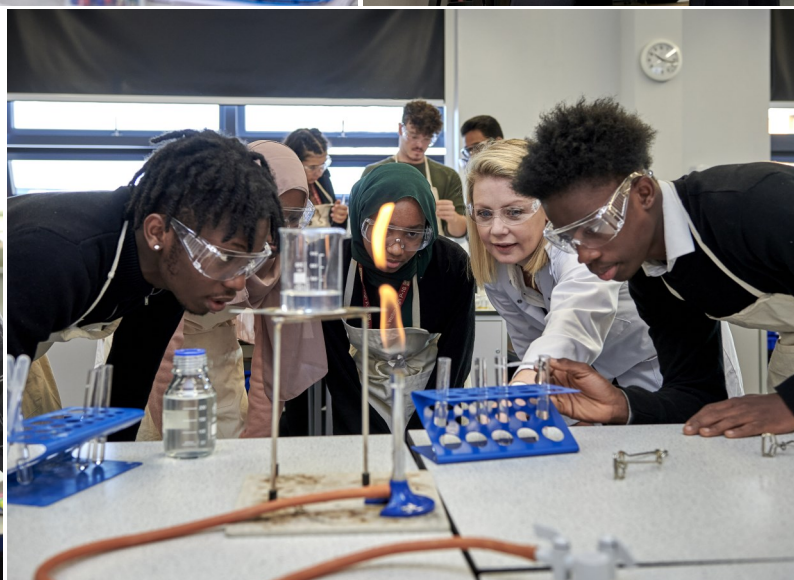


Walton High

Post 16 Prospectus

2024-26

Part 2: Course Directory



Milton Keynes Education Trust
(Registration No: 7663689)

Contents

A Level Courses	4
Applied General/Technical Courses	27
One Year Courses.....	40
Provisional Option Blocks	42



A Level Courses

Accounting.....	4
Ancient History.....	5
Biology.....	6
Business Studies.....	7
Chemistry.....	8
Computer Science	9
Economics.....	10
English Language.....	11
English Literature.....	12
French.....	13
Geography.....	14
History.....	15
Law.....	16
Mathematics/Further Mathematics.....	17
Media Studies.....	18
Music	19
Physics.....	20
Politics.....	21
Psychology.....	22
Religion, Philosophy and Ethics.....	23
Sociology.....	24
Spanish.....	25

Accounting

A Level

Exam Board: AQA



A qualification in accounting will always be helpful – whether it's used professionally or personally. This course helps students to understand the responsibilities of the accountant and the impacts of their recommendations on business and the wider environment. Students will build knowledge and understanding of key concepts, principles and techniques that they can apply to real-life scenarios, developing the ability to solve problems logically, analyse data methodically, make reasoned choices and communicate effectively.

Course Content

The specification emphasises both financial accounting and the recording of past events, and management accounting as a means of planning and decision making. Students will develop an understanding of the principles of bookkeeping and ethical behaviour which inform the actions of all those working within an accounting environment.

This qualification is linear. Linear means that students will sit all their exams at the end of the course. Topics covered include:

- ◆ An introduction to the role of the accountant in business
- ◆ Types of business organisation
- ◆ The double entry model
- ◆ Verification of accounting records
- ◆ Accounting concepts used in the verification of records
- ◆ Preparation of financial statements for sole traders
- ◆ Limited company accounts
- ◆ Analysis and evaluation of financial information
- ◆ Budgeting
- ◆ Marginal costing
- ◆ Standard costing and variance analysis
- ◆ Absorption and activity based costing
- ◆ Capital and investment appraisal
- ◆ Accounting for organisations with incomplete records
- ◆ Partnership accounts
- ◆ Accounting for limited companies
- ◆ Interpretation, analysis and communication of information
- ◆ The impact of ethical considerations

Exam Structure

Paper 1: Sections 1–8, 14–18 of the subject content is assessed in this paper. The exam is a written exam and is worth 50% of the final grade. There are three sections in the paper: Section A has 10 multiple choice questions and several short answer questions. Section B has two structured questions each worth 20 marks. Section C has two extended answer questions each worth 25 marks. The paper is three hours long and total marks available is 120.

Paper 2: Sections 1–3, 8–13, 17–18 of the subject content is assessed in this paper. The exam is a written exam and is worth 50% of the final grade. There are three sections in the paper: Section A has 10 multiple choice questions and several short answer questions. Section B has two structured questions each worth 20 marks. Section C has two extended answer questions each worth 25 marks. The paper is three hours long and total marks available is 120.

Which Doors Will Be Opened?

A level Accounting combines well with a range of subjects, including Maths, Economics, Business Studies and Social Sciences. A level Accounting provides a sound basis for students wishing to go into higher education. Students often choose Accounting, Economics and Finance degrees, but the subject can also be very helpful in the study of business and management or related disciplines, which frequently contain financial modules. Students can embark on apprenticeship programmes available up to degree level or level 7 Chartered Accountancy courses such as AAT, CIMA, ACCA and ACA. Some degrees will provide exemptions from professional accounting exams on graduation. Employers are very keen to get young people with the knowledge of bookkeeping on board and they are willing to support them to grow in the accountancy field.

Extras

We offer a range of activities to enhance the course. Summer placement with Price Waterhouse Coopers (PWC), students get to have an insight of prospective careers path.

Students will have the opportunity to learn how to apply their spreadsheet knowledge and accounting as part of the enrichment programme. They will also have access to a short course about Using Computer Software Accounting to prepare them access to the job market' once they complete their A level Accounting.

For more information, please contact Mrs Peerbaccus at Brooklands.

Ancient History

A Level

Exam Board: OCR



A subject not commonly offered by many school sixth forms and colleges, Ancient History will provide students with a unique opportunity to learn about the history of ancient Greece and Rome. Ancient History is a subject highly valued by both universities and employers, due to the knowledge and transferable skills it develops. This course will particularly appeal to students looking to learn about a new period of history or with a personal interest in Roman History and Greek Mythology. This course also combines well with subjects including History, English Literature, Art, Law and Politics.

Course Content

The A level is made up of two components. Component 1 covers Ancient Greece and Component 2 looks at Ancient Rome. Each is made up of one compulsory period study and a depth study. Both components are worth 50% of the final A level.

Exam Structure

There is no coursework in this subject. Students are assessed through two 2.5 hour exams. One on Ancient Greece and one on Ancient Rome.

Course Structure

Component 1: Ancient Greece

Component one is assessed by a 2.5 hour examination.

- ◆ Period Study: Relations between Greek states and between non-Greek states, 492 BC—404 BC. This unit provides an introduction to Ancient Greece as well as studying key events and individuals. Areas of study will include; the threat from the Persian Empire, Greece in conflict and the relationship between Athens and Sparta. This unit also offers the opportunity to investigate key military events such as the Battle of Marathon.
- ◆ Depth Study: The Rise of Macedon, 359-323 BC

Component 2: Ancient Rome

Component two is also assessed by a 2.5 hour examination.

- ◆ Period Study: The Julio-Claudian Emperors 31 BC - AD 68. This unit will require students to demonstrate an understanding of key historical terms and concepts. This unit will cover the rule of significance Roman Emperors such as Augustus, Tiberius, Gaius, Claudius and Nero. This unit will also look at key events such as the Invasion of Britain and the Great Fire of Rome in AD 64.
- ◆ Depth Study: The Breakdown of the Late Republic 88-31 BC



Transferrable Skills

Students will develop their writing, source analysis and presentation skills throughout this course. There will also be opportunities for debate and critical thinking as well as chances to develop hands on skills needed in the archaeology industry.

Which Doors Will Be Opened?

With a qualification in Ancient History, students could go on to higher education and study degrees such as; History, Heritage, Archaeology, Classics and Anthropology. Additionally this course also offers a gateway to many other arts and social science courses available. Students can also use a History qualification to work in a great variety of careers in business and administration, the law, journalism and the media, as well as the more traditional careers such as teaching or working in museums and libraries.

Extras

The study of Ancient History also carries several opportunities outside of the classroom. Students will be encouraged to complete hands-on volunteering opportunities in the field of archaeology with local archaeology organisations. This holds the added benefit of completing the Archaeology Skills Passport. There is also the possibility for trips to Rome and Greece as well as places of historical significance in the UK such as Hadrian's Wall and the British Museum.

For more information, please contact Mr Farren at Brooklands.

Biology

A Level

Exam Board: OCR A



In choosing to study this subject, students will be provided with an exciting insight into the world of Biology. All the key concepts of Biology are covered across the two years, from cell structure and biochemistry to the structure and function of organs, evolution, genetics and ecology. Practical skills are an essential part of any A level in science, and these are integrated throughout the A level Biology course. There are many career paths in which A levels in science are vital, and it is recommended that students research the requirements for their chosen career path beyond A level now.

Course Content

- ◆ **Module 1:** Development of Practical Skills
- ◆ **Module 2:** Foundations in Biology
- ◆ **Module 3:** Exchange and Transport
- ◆ **Module 4:** Biodiversity, Evolution and Disease
- ◆ **Module 5:** Communication, Homeostasis, Energy
- ◆ **Module 6:** Genetics, Evolution and Ecosystems

Exam Structure

(% weighing each component counts towards the final grade)

- ◆ **A Level Paper 1**
Assesses the content from Modules 1, 2, 3 and 5 (37%)
- ◆ **A Level Paper 2**
Assesses the content from Modules 1, 2, 4 and 6 (37%)
- ◆ **A Level Paper 3**
Assesses the content from Modules 1 to 6 (26%)

Practical Endorsement

Throughout the course, students will be expected to carry out a range of practical tasks independently, the understanding of which will be assessed in the three exams. The completion of all the required practical tasks will achieve a certificate in the practical endorsement.

Which Doors Will Be Opened?

Biology A level is a vital qualification for a career in, amongst others, medicine, forensics and genetics. It can also open up career opportunities in biological research, sports and science communication, the animal sciences and environmental studies. Biology is a strong supporting subject in many scientifically and non-scientifically oriented careers. As a result, it links well with any of the other science A levels, particularly Chemistry and with Maths, Geography and ICT in virtually any combination. The transferrable skills learned, such as problem solving are also useful for many other areas.



Extras

To further enhance learning in A level Biology, students will be able to take part in a Biology Masterclass, aiming to enhance and develop the required practical skills. They will participate in sampling of the local environment and studying the evolution of life on Earth through a visit to the Natural History Museum and will also be able to get involved with the Eco Club & maintaining the wildlife garden on site at Walnut Tree. Biology students are encouraged to take roles mentoring students in younger years and assist with the running of activities with the Key Stage 3 Science Club. Regular support sessions are provided on a weekly basis for all students.

For more information, please contact Miss Skelton at Walnut Tree or Mrs Wheeler at Brooklands.

Business Studies

A Level

Exam Board: AQA



The business world is constantly changing and if students want to understand how businesses really work and how they survive in an increasingly globalised environment, then A level Business Studies could be just what they are looking for. This is a dynamic subject which does not stand still and combines well with many other subjects. In an increasingly competitive job market, work-related skills are vitally important. A business course will develop valuable research and presentation skills, confidence with data handling, analysis and evaluative skills and the ability to approach problems and present written information logically.

Course Content

This course explores how businesses work and the external environment in which they operate. The ten modules of study for the A level programme are:

- ◆ What is business?
- ◆ Managers, leadership and decision making.
- ◆ Decision-making to improve marketing performance
- ◆ Decision-making to improve operational performance
- ◆ Decision-making to improve financial performance
- ◆ Decision-making to improve human resource performance
- ◆ Analysing the strategic position of a business
- ◆ Choosing strategic direction
- ◆ Strategic methods: how to pursue strategies
- ◆ Managing strategic change

Exam Structure

Paper 1: Assesses students' knowledge synoptically. The exam is a written exam and is worth 33.3% of the final grade. There are three sections in the paper: Section A has 15 multiple choice questions worth 15 marks, Section B has short answer questions worth approximately 35 marks and Section C and D has two essay questions worth 25 marks each.

Paper 2: Assesses students' knowledge synoptically. The exam is a written exam and is worth 33.3% of the final grade. There are three sections in the paper consisting of three data response compulsory questions, worth approximately 33 marks each and made up of three or four part questions.

Paper 3: Assesses students' knowledge synoptically. The exam is a written exam and is worth 33.3% of the final grade. There is one compulsory case study followed by approximately six questions.

Which Doors Will Be Opened?

Business Studies A level combines well with a range of subjects, including Economics, Finance, Accounting, Languages

and social sciences, and can lead into higher education or apprenticeship courses in Business Studies, Accountancy, Law and Economics, or other subjects combined with Management. Potential career routes include accountancy, law, leisure management, banking, IT, engineering, recruitment, sales and marketing.

Extras

We offer a range of activities to enhance the course. We involve local businesses in project work and arrange visits to look at how business theory is applied 'in the real world'. Students will also have the opportunity to take part in the Mentoring with CoC; ALDs; Young Enterprise Company Scheme, NatWest Business Challenge; various Trips e.g. Frankfurt/Brussels/NewYork; Employability Clinic; Guest Speakers' lectures and live Skype seminars with well known members of the international business community.



For more information, please contact Mr Bessong at Walnut Tree or Mr Dannell at Brooklands.

Chemistry

A Level

Exam Board: OCR A



The Chemistry A level is a challenging and exciting opportunity for students to increase their understanding of the chemical precepts that affect everyday life. There are many career paths such as medicine, forensics and pharmacology for which a Chemistry A level is essential. The rigour of the Chemistry A level means that it is very favourably looked on by higher education institutions, even for courses that do not necessarily involve the sciences. In selecting Chemistry, it is vital students have researched the requirements necessary for their chosen career path beyond A level.

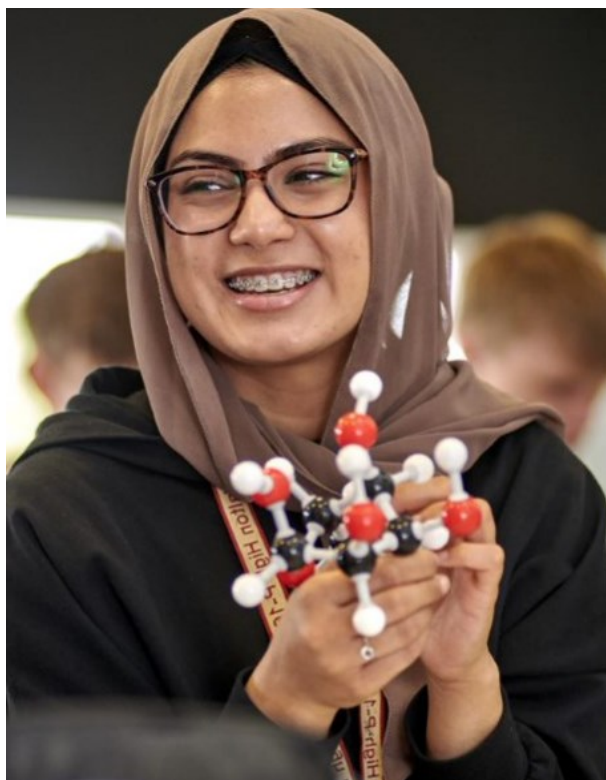
Course Content

- ◆ **Module 1:** Development of Practical Skills
- ◆ **Module 2:** Foundations in Chemistry
- ◆ **Module 3:** Periodic Table and Energy
- ◆ **Module 4:** Core Organic Chemistry
- ◆ **Module 5:** Physical Chemistry & Transition Elements
- ◆ **Module 6:** Organic Chemistry and Analysis

Exam Structure

(% weighing each component counts towards the final grade)

- ◆ **Paper 1**
Assesses the content from Modules 1, 2, 3 and 5 (37%)
- ◆ **Paper 2**
Assesses the content from Modules 1, 2, 4 and 6 (37%)
- ◆ **Paper 3**
Assesses the content from Modules 1 to 6 (26%)



Practical Endorsement

Throughout the course, students will be expected to carry out a range of practical tasks independently, the understanding of which will be assessed in the three exams. The execution of these practical experiments means that students leave the A level with the necessary skills for an undergraduate Chemistry course, or indeed, any science degree. The analysis of these experiments also furnishes students with an opportunity to apply the ideas learned in class to actual practical work.

Which Doors Will Be Opened?

Chemistry is a vibrant and exciting subject. It is involved in everything around us - from the making of new materials to understanding biological systems, from the food we eat to the medicines which keep us healthy, and from the quality of the water we drink to keeping the air we breathe pure. Chemistry is often referred to as the central science because it joins together Physics and Mathematics, Biology and Medicine, and the Earth and Environmental Sciences. Chemistry A level is a vital qualification for a career in the chemical and allied industries; these employ large numbers of chemists in research, development, sales, marketing and management. The intellectual training obtained in studying Chemistry is also ideal for a career in areas not directly related to chemical sciences such as finance and law. A level Chemistry is also a requirement for medicine, dentistry and veterinary courses.

Extras

Two support sessions a week are offered for A level Chemists. We also offer opportunities for our Post 16 Chemistry students to become mentors to GCSE science students, something which is both rewarding for our students and looked upon favourably by universities. Students can also assist in the provision of the KS3 science club. Master classes from the Open University lecturers are offered throughout the two year course.

For more information, please contact Mr Lund at Walnut Tree or Dr Masson at Brooklands.

Computer Science

A Level

Exam Board: OCR



This is a practical and intensely creative subject where students can apply the academic principles learned in the classroom to real-world systems. It combines invention and excitement, and can look at the natural world through a digital prism. Among many things, the aims of this qualification is to enable learners to develop an understanding and ability to apply the fundamental principles and concepts of Computer Science.

Course Content:

The aims of this qualification is to enable learners to develop:

- ◆ An understanding and ability to apply the fundamental principles and concepts.
- ◆ The ability to analyse problems in computational terms through practical experience.
- ◆ Emphasis on problem solving using computers.
- ◆ The capacity to think creatively, innovatively, analytically, logically and critically.
- ◆ The capacity to see relationships between different aspects of Computer Science.
- ◆ Emphasis on the mathematical skills used to express computational laws and processes, e.g. Boolean algebra/logic and algorithm comparison.
- ◆ The ability to choose and provide a solution to a computing problem according to the guidance in the specification.

Learners must take all components (01, 02 and 03) to be awarded the OCR A level in Computer Science.

Units Covered:

- ◆ **Unit 01** Computing Principles—40 %
- ◆ **Unit 02** Algorithm and Problem Solving— 40%
- ◆ **Unit 03** NEA-Programming Project— 20%

Entry requirements:

5 GCSEs (including Computer Science/ICT)/ Level 2 BTECs with a minimum grade of level 5 in GCSE English Language and Maths. Students who have studied Level 2 BTEC ICT or Cambridge Nationals at Level 2 will require at least a Merit.

Exam Structure

Units 01 and 02 are externally assessed. They are both worth 40% each of the A level total marks and are both exam based units. No calculators are allowed in each exam. Unit 03 is a NEA (non-exam assessment).

Grades achieved in A level Computer Science will carry more weight with universities as they are externally assessed.

Knowledge gained in the study of these units will also help prepare you for relevant industry qualifications such as CompTIA A+, CISMP. Emphasis on computer programming and algorithms.

Which Doors Will Be Opened?

A level Computer Science will help you in all sorts of positions in nearly every industry. From designing or customising computer applications software; selecting appropriate software for clients to analysing data to identify, recommend and plan new system installations or modifications.

A level Computer Science provides a strong base for progression to university, apprenticeships or the workplace.

Some courses at universities related to this course:

- ◆ BSc (Hons) in Computing
- ◆ Computer Science (AI)
- ◆ Computer Engineering

Extras

All three units mentioned above are mandatory and required to pass this course. We will involve IT firms/employer participation in this course and we accomplish this through ALDs, invited IT specialist guest speakers, enrichment opportunities and clubs students can get involved with.



For more information, please contact Ms Edike at Walnut Tree or Mr Henley at Brooklands.

Economics (A)

A Level

Exam Board: Edexcel



Economics is a social science primarily concerned with the behaviour and relationships of people and societies. Many of the problems which dominate our newspaper headlines are economic problems. The study of Economics will enable students to use and interpret data to analyse economic problems and discuss alternative courses of action. Economics is therefore a highly regarded academic field of study that helps students develop an awareness and understanding of the economic forces that shape all our lives.

Course Content

The course is divided into four themes:

- ◆ **Theme 1:** Introduction to Markets and Market Failure
- ◆ **Theme 2:** The UK Economy (Performance and Policies)
- ◆ **Theme 3:** Business Behaviour and the Labour Market
- ◆ **Theme 4:** A Global Perspective

Students will be expected to develop an ability to comprehend, examine, apply and evaluate a range of economic topics such as:

- ◆ Markets and How They Work
- ◆ Economic Growth and Economic Recessions
- ◆ International Trade
- ◆ The European Union
- ◆ Inflation and Unemployment
- ◆ Developing Countries and Globalisation
- ◆ Government and Economic Policy

Exam Structure

The A level consists of three separate papers:

Paper 1: Markets and Business Behaviour. Questions are drawn from Theme 1 and Theme 3. The exam is a written exam and is worth 35% of the final grade. There are three sections to the paper. Section A consists of multiple-choice and short-answer questions, Section B: one data response question and Section C: one extended open response question (choice of one from two).

Paper 2: The National and Global Economy. Questions are drawn from Theme 2 and Theme 4. The exam is a written exam and is worth 35% of the final grade. There are three sections to the paper. Section A consists of multiple-choice and short-answer questions, Section B: one data response question and Section C: one extended open response question (choice of one from two).

Paper 3: Microeconomics and Macroeconomics. Questions are drawn from theme 1-4. The exam is a written exam and is worth 30% of the final grade. The paper comprises two sections. Each section comprises one data response question broken down into a number of parts, including a choice of extended open-response questions; students select one from a choice of two.

Which Doors Will Be Opened?

The study of Economics A level would be a useful foundation for a career in higher education or a career in a variety of fields including: economics, journalism, politics, business, accounting, law, civil service and education. It also complements the study of Geography, History and Government & Politics.

Extras

Students will also have the opportunity to take part in a national essay writing competition and benefit from guest speaker visits from the Bank of England. Regular support sessions are also available specifically for A level students, in which help will be provided on a range of key areas to foster a deepening interest and engagement in the subject.



For more information, please contact or Miss Dyson at Brooklands.

English Language

A Level

Exam Board: AQA



A level English Language offers opportunities for students to create texts and reflect critically on their own processes of production, while analysing the texts produced by others. The course explores the study of English Language both as a medium of communication and as a topic in its own right, with an emphasis on the ability of students to pursue lines of enquiry, debate different views, and work independently to research aspects of language in use. English Language can be complemented by many other subjects such as English Literature, Sociology and Modern Foreign Languages.

Course Content

Unit 1: The Individual and Society. The aim of this part of the subject content is to introduce students to language study, exploring textual variety and children's language development.

This area of study introduces students to methods of language analysis to explore concepts of audience, purpose, genre, mode and representation. It also introduces students to the study of children's language development, exploring how children learn language and how they are able to understand and express themselves through language.

Unit 2: Language Diversity and Change. The aim of this area of study is to allow students to explore language diversity and change over time.

Students will study the key concepts of audience, purpose, genre and mode and will explore language in its wider social, geographical and temporal contexts. They will explore processes of language change. This part of the subject content also requires students to study social attitudes to, and debates about, language diversity and change.

Unit 3: Language in Action. The aim of this area of study is to allow students to explore and analyse language data independently and develop and reflect upon their own writing expertise.

Students can choose to pursue a study of spoken, written or multimodal data, or a mixture of text types, demonstrating knowledge in areas of individual interest.

Exam Structure

- ◆ **Unit 1: The Individual and Society**
Written examination 40%
- ◆ **Unit 2: Language Diversity and Change**
Written Examination 40%
- ◆ **Unit 3: Language in Action**
Non-Examined Assessment 20%
A language investigation (2,000 words excluding data)
A piece of original writing and commentary (750 words each).

Which Doors Will Be Opened?

A qualification in English Language can lead to a wide range of opportunities in Linguistics, social sciences and Communication at degree level. As a subject that emphasises exploration of language in all its forms, disciplined analysis and communication as well as creativity, English Language is welcomed as a qualification for many courses and careers.

In recent years, our English Language A level students have gone on to study courses including Linguistics, Global Communications and Journalism.

Extras

Alongside the course, students are invited to join the Post 16 creative writing society. Where possible, conferences aimed at Post 16 students and opportunities to attend talks by prominent linguists and discuss their work will form part of our course. A variety of enrichment opportunities are also offered throughout the course including the Battle Royale between Language and Literature students that encourages a competitive approach to revision and independent learning.

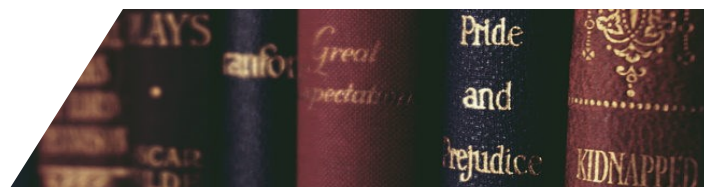


For more information, please contact Miss Treadwell at Walnut Tree or Mrs Hake at Brooklands.

English Literature

A Level

Exam Board: AQA



By studying English Literature, you enter an exciting world where imagination and creativity are paramount. Through the study of a wide range of texts, students will be encouraged to develop their interest and enjoyment in literary studies. Reading is an essential part of the course and all students are encouraged to develop an active, critical approach to texts. Critical opinions and judgements are encouraged, if not demanded, by the course. English Literature is at the centre of the Arts and can be complemented by many other subjects such as History, Modern Languages and Law.

Course Content

Unit 1: Love through the Ages. The aim of this topic area is to encourage students to explore aspects of a central literary theme as seen over time, using unseen material and set texts. Students should be prepared for Love through the Ages by reading widely in the topic area, reading texts from a range of authors and times. The unit is assessed through two written examinations.

Students will study the following texts:

- ◆ Othello by William Shakespeare
- ◆ The Great Gatsby by F. Scott Fitzgerald
- ◆ AQA Anthology of love poetry (pre-1900) by various authors

Unit 2: Texts in Shared Contexts-Modern Times-Literature from 1945 to Present Day. The aim of this topic area is to encourage students to explore aspects of literature connected through a period of time. This unit is assessed through written examinations.

Students will study the following texts:

- ◆ The Handmaid's Tale by Margaret Atwood
- ◆ A Streetcar Named Desire by Tennessee Williams
- ◆ Feminine Gospels by Carol Ann Duffy

Unit 3: Independent Critical Study-Texts across Time. This unit is assessed through a comparative critical study of two texts, one of which will be:

- ◆ Dracula by Bram Stoker

Students are able to select a second text of their choice upon which to base their Non Examined Assessment.

Exam Structure

- ◆ **Unit 1: Love through the Ages.**
Written examination 40%
- ◆ **Unit 2: Texts in Shared Context-Modern Times: Literature from 1945 to the Present Day.**
Written Examination 40%

◆ Unit 3: Independent Critical Study-Texts across Time.

2,500 word Non Examined Assessment 20%

Which Doors Will Be Opened?

A qualification in English Literature can lead to a wide range of opportunities in the Arts, Humanities and Communication at degree level. As a subject that emphasises creativity, disciplined thought and communication as well as an ability to synthesise and contextualise ideas, English Literature is welcomed as a qualification for many courses and careers.

In recent years, our English Literature A level students have gone on to study courses including English Literature at Magdalen College of Oxford, Journalism, Law, and Theology

Extras

To support the study of dramatic texts, where possible, we visit the theatre to see the plays we are studying and works by authors we encounter. There is also the opportunity to join our English Literature Society and explore a wide range of texts that have sparked debate over the ages. Where possible, academic conferences aimed at Post 16 students and opportunities to hear modern authors discuss their work will form part of the enrichment programme. Other activities offered throughout the course include the Battle Royale between Literature and Language students to encourage a competitive approach to revision and independent learning.



For more information, please contact Miss Treadwell at Walnut Tree or Mrs Hake at Brooklands.

French

A Level

Exam Board: AQA



A level French encourages maximum use of the language, with lessons normally conducted in the foreign tongue. The course is designed to enable you to develop and build on the skills acquired at GCSE, and to provide a much deeper insight into Francophone culture and society. Choosing to study French you will achieve a practical language skill in a variety of contexts and registers, whilst being offered an intellectual challenge: the skills of analysing and expressing ideas and arguments coherently and accurately both in essays and orally are developed.

Course Content

In Year 12 French, students study:

- ◆ The changing nature of family (La famille en voie de changement)
- ◆ The 'cyber-society' (La cyber-société)
- ◆ The place of voluntary work (Le rôle du bénévolat)
- ◆ A culture proud of its heritage (Une culture fière de son patrimoine)
- ◆ Contemporary francophone music (La musique francophone contemporaine)
- ◆ Cinema: the 7th art form (Cinéma: le septième art)

Students will also study one literary text or film from the AQA prescribed list as well as beginning preparation of their Independent Research Project (IRP) in the latter part of the year. The summer holidays will provide a useful opportunity to compile research materials and gather information.

In Year 13 French, students study:

- ◆ Positive features of a diverse society (Les aspects positifs d'une société diverse)
- ◆ Life for the marginalised (Quelle vie pour les marginalisés?)
- ◆ How criminals are treated (Comment on traite les criminels)
- ◆ Teenagers, the right to vote and political commitment (Les ados, le droit de vote et l'engagement politique)
- ◆ Demonstrations, strikes – who holds the power? (manifestations, grèves – à qui le pouvoir?)
- ◆ Politics and immigration (La politique et l'immigration)
- ◆ A second literary text or a film

Exam Structure

There are 3 components to the A level examination:

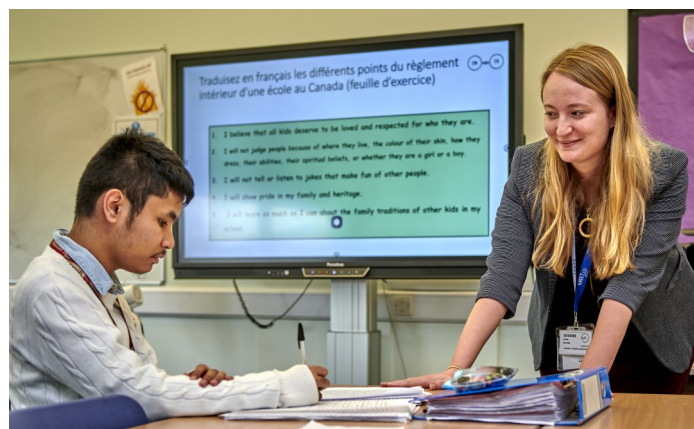
- ◆ **Paper 1:** Listening, Reading and Writing (50% of the A level): written exam, where students have control of the recording for the Listening section.
- ◆ **Paper 2:** Writing (20% of A level): written exam based on the literary and/or filmic works studied.
- ◆ **Paper 3:** Speaking (30% of A level): Individual Research Project and one of four themes discussed.

Which Doors Will Be Opened?

Studying French at A level will provide students with a sound basis for further study and enhance their employment prospects. Beyond the language competency, students acquire transferable skills such as autonomy, resourcefulness, creativity, critical thinking and linguistic, cultural and cognitive flexibility. The skills acquired will open doors to further study and work opportunities. Language skills are highly sought after both by universities and employers alike, and are a great asset in fields ranging from Arts to Law, from Business to Science, from History to Engineering. After the course, students might use foreign language sources for university essays or giving presentations to international business partners. Previous students of French have studied abroad or pursued language studies, international law and business degrees.

Extras

Students are strongly encouraged to read or listen to French media regularly. Furthermore, students will be provided with opportunities to expand their socio-cultural knowledge beyond the specification, through watching additional films, for example, and to support younger students of French through peer mentoring. Where possible, students choosing to study French are encouraged to take part in a visit abroad during the course of their study. We are able to support students with details of organisations that could facilitate this if necessary. Where appropriate, opportunities to attend lectures on the works studied will also be available.

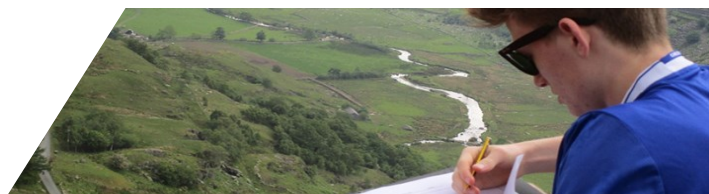


For more information, please contact Mrs Gatley at Walnut Tree or Miss Amara at Brooklands.

Geography

A Level

Exam Board: AQA



There has never been a better or more important time to study A level Geography. Dealing with vital issues such as climate change, migration, environmental degradation, social issues and natural hazards, A level Geography is one of the most relevant subjects one could choose to study. Students enjoy the scope of the material they cover in geography, the insights it can provide into the world around us and the highly contemporary nature of the issues it tackles. To study A level Geography, students need to have an enquiring and open mind. Geography is a study of the world around us and an awareness of issues worldwide, not just in the UK is required.



Course Content:

Physical Geography

- ◆ Hazards (tectonics, tropical storms and wildfires)
- ◆ The water and carbon cycles
- ◆ Glacial systems and landscapes

Human Geography

- ◆ Global systems and global governance
- ◆ Changing places
- ◆ Contemporary urban environments

Throughout the A level, students will develop a wide range of geographical skills. These will focus on investigative, cartographic, graphical, ICT and statistical skills. They will also undertake one independent investigation that involves fieldwork.

Fieldwork

Students are required to undertake a **minimum of four days** of fieldwork for the A level. We run a residential trip to Snowdonia, Wales in Year 13, which **all students will need to attend**. There may also be further day trips to develop case studies and examples in Milton Keynes and London.

Exam Structure

There are 3 components

Exams will make up 80% of the assessment:

- ◆ **Component 1:** Physical Geography (2h 30m).
- ◆ **Component 2:** Human Geography (2h 30m).

Coursework will make up 20% of the assessment:

- ◆ **Component 3:** Geography Fieldwork Investigation. The coursework is a 3,000-4,000 word report based on fieldwork students have undertaken.

Which Doors Will Be Opened?

With a qualification in Geography, one can enter higher education studying a range of science and humanities based courses. Since Geography develops many transferable skills, it can lead to a wide range of employment opportunities such as town planning, environmental management, journalism and law.

Extras

We are hoping to offer a fieldtrip to Iceland. This would be subject to a number of students expressing interest. Also, several of our Post 16 Geography students mentor younger students to guide them through their GCSE exams.

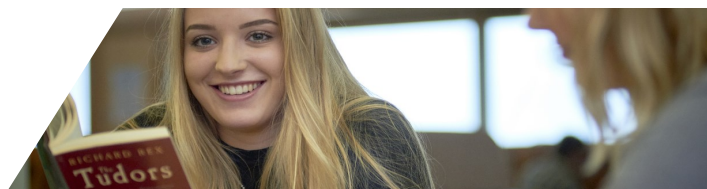


For more information, please contact Mr Cobb at Brooklands or Mr Watson at Walnut Tree.

History

A Level

Exam Board: OCR



History is not just the study of the past. When we study the events, people and societies of the past, we are investigating human behaviour and learning more about ourselves and the complex world in which we live today. The study of History at A level requires independent reading, engagement with historical interpretations and examination of historical sources. Students will be taught to be critical of the past, examine a wide range of societies and political systems and develop transferable skills to be successful in the modern world.

Course Content

The A level is made up of four units and combines three examined and one coursework unit. Units 1 and 2 will be delivered in Year 12. Units 3 and 4, along with revision of Units 1 and 2 will be delivered in Year 13.

Exam Structure

- ◆ **Unit 1: Brooklands - British period study and enquiry: From Pitt to Peel-Britain 1783-1853, with enquiry topic : Peel and the Age of Reform 1832-1853.** This unit focuses on the government of William Pitt the Younger, the radical threats and fear of revolution in Britain and the campaign for political reform by middle and working class people in the context of the early industrial revolution. It involves a 90 minute examination worth 25%.

Section A: Enquiry – An extended response based on the evaluation and analysis of four documents within their historical context. **Section B** - Answer one essay question from a choice of two.

- ◆ **Unit 1: Walnut Tree - British period study and enquiry: England 1445 - 1509 Lancastrian, Yorkists and Henry VII with enquiry topic on the Wars of the Roses 1445 - 1461.** This unit focuses on the key personalities and developments of the late medieval and early Tudor periods. It involves a 90 minute examination worth 25%.

Section A: Enquiry – An extended response based on the evaluation and analysis of four documents within their historical context. **Section B** - Answer one essay question from a choice of two.

- ◆ **Unit 2: Non British period study - The Cold War in Europe 1941 - 1995.** This unit focuses on political developments in Europe such as the space race, communism and capitalism and developments in Russia, Germany and Yugoslavia. In a one hour examination worth 15% students will answer one two-part question from a choice of two.
- ◆ **Unit 3: Brooklands - British Empire: From colonialism to independence 1857-1965.** This unit is a thematic unit focusing on the changing nature of the British Empire. Students will examine the factors which encouraged and discouraged change during this period. The unit covers developments across the whole of the Empire, including Asia (e.g. India, Malaya), North Africa and the Middle

East (e.g. Egypt, Sudan, Palestine, Iraq), East and West Africa (e.g. Kenya, Uganda, Tanganyika, Gold Coast, Nigeria), Southern Africa (South Africa, North and South Rhodesia, Nyasaland, Bechuanaland), the Caribbean, Canada and Australia/New Zealand. Students will study the government and administration of the Empire, opposition to British rule and the impact of Empire on Britain, its people and relations with the rest of the world in the 19th and early 20th centuries. It involves a 2 hour 30 minute exam worth 40%.

- ◆ **Unit 3: Walnut Tree - Thematic study - Rebellion and Disorder under the Tudors 1485 – 1603.** This unit builds on the British unit studied in Year 12 but involves the study of major turning points and the comparison of rebellions over time, rather than a detailed study of all events of the Tudor period. Compulsory in depth studies form part of this unit which is worth 40%.

- ◆ **Unit 4: Coursework Personal Study.** Students are required to produce a 3,000 – 4,000 word essay on a topic that includes the study of sources and interpretations and which enables substantiated historical judgements to be reached. This is not a taught unit. Students need to undertake independent research before going on to write their essay. Students will be supported and monitored throughout via tutorials, presentations and interim deadlines. This unit is worth 20%.

Which Doors Will Be Opened?

With a qualification in History, students could go onto higher education, not just to study History but any one of the many arts and social science courses available. A History qualification may be used to work in a great variety of careers in business and administration, the law, journalism and the media (as well as the more obvious careers such as teaching or working in museums and libraries).

Extras

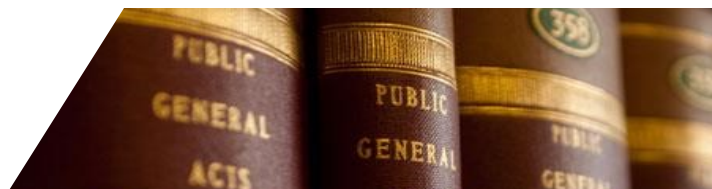
Students will be encouraged to mentor students from the main school. In recent years students have had the opportunity to take part in online talks by historians and to have History Masterclasses from History graduates.

For more information, please contact Miss Smith at Walnut Tree or Mrs Gifford at Brooklands.

Law

A Level

Exam Board: AQA



Law involves the study of the legal system in England and Wales. You will gain an overview of how the civil and criminal courts work and learn about the part played by both legal and lay personnel. You will see how the Law develops and changes over time. As well as being innately interesting, A level Law provides a taster for Law at university, and gives students a head start compared to those who have never studied Law before. A level Law is also useful for those with no intention of reading Law at university. It is stimulating, promotes critical thinking, and deals with current issues and past case studies.

Course Content

- ◆ **The Legal System:** Students study the components that make up the English Legal System including; criminal and civil courts, legal personnel (barristers/solicitors/judges) and access to justice (legal funding).
- ◆ **Law Making:** This section focuses on how laws are created including Parliamentary law making, statutory interpretation, judicial precedent and delegated legislation.
- ◆ **Further Law:** A more debate based section developing an understanding of the law in conflicts between Law and Morality, Law and Justice, Law and Society and Law and Technology.
- ◆ **Criminal Law:** An exciting exploration of both fatal and non-fatal offences, as well as offences against property, defences and attempts.
- ◆ **Tort Law:** An opportunity to learn about the civil law of negligence; establishing how a duty of care, breach of duty and damage can result in liability. As well as examining the process of making a claim, the defences that may be claimed and the awards available to claimants.
- ◆ **Contract Law:** This involves the elements and principles of contract law, including rights and remedies. This furthers understanding of civil courts and how claims are dealt with in the legal system.

Exam Structure

There are three examinations to be taken at the end of Year 13. All three are equally weighted.

- ◆ **Paper 1:** English Legal System & Method and Criminal Law (33%).
- ◆ **Paper 2:** English Legal System & Method and the Law of Tort (33%).
- ◆ **Paper 3:** English Legal System & Method and Contract Law (33%).

Which Doors Will Be Opened?

This course is of use to students contemplating Law as a university subject and is also relevant to other courses such as Politics, Sociology, Business and History. For those not intending to take a university course it would be of use to students wishing to work in some branch of the Law, e.g. as a Legal Executive - for which it gives some training exemptions, the Police Force or the Civil Service.

Extras

Students who study Law are encouraged to join additional enrichment, such as debate club. A Law trip to see the Courts and Parliament is offered and guest speakers such as solicitors come in to talk to students about the legal profession.



For more information, please contact Mrs Penaligon at Walnut Tree or Mr Yearwood at Brooklands.

Mathematics/Further Mathematics

A Level

Exam Board: AQA



Mathematics equips students with a uniquely powerful set of tools to understand and change the world, including logical reasoning, problem solving skills and the ability to think in abstract ways. Through these tools, students will develop the framework to think logically and communicate precisely in a range of quantitative and other contexts. A Maths qualification is very much in demand, and will certainly be a key to open up many opportunities for the holder.

Course Content

Mathematics

The course content is 100% prescribed. All students will study Pure Mathematics, Mechanics and Statistics. Pure Maths extends the work on algebra and trigonometry undertaken at GCSE, as well as introducing new topics such as logarithms, calculus, proof and vectors. Mechanics includes kinematics, motions under gravity and working with large data sets, probability calculations, using binomial and normal distributions as models and statistical hypothesis testing.

Further Mathematics

The course contains a proportion of optional content. All students will study the Further Pure Mathematics with a choice of Mathematics, Statistics or extra Pure for additional units.

Pure units extend the work on some of the topics in the A level Maths course, as well as introducing new topics such as complex numbers, matrices and conic sections.



Exam Structure

Mathematics - Assessment is linear and 100% examination based (no coursework). There are three examinations, all of which are taken at the end of Year 13. All the exams are two hours long and are equally weighted.

Further Mathematics - Assessment is linear and 100% examination based (no coursework). There are three examinations, all of which are taken at the end of Year 13. 50% of the final grade will be based on the mandatory Pure unit.

Which Doors Will Be Opened?

Maths A level and Further Maths can lead to a myriad of courses in higher education, including Maths, Physics, Engineering, Computing, Chemistry, Accountancy, Architecture, Banking, and Medicine, and can lead to careers in scientific/statistical research and software design. It can also support Biology, Geography, Economics, Business Studies and any of the social sciences. Note that students wishing to take Maths or a heavily maths-based course at university should consider taking Further Maths as well as Maths, as Further Maths is a requirement for such courses at many universities. Strength in algebra is essential.

Extras

Students will have the opportunity to participate in the Senior UK Maths Challenge, both individual and team, work on weekly Maths challenges, and join Maths Club where problem solving will be the focus.

For more information, please contact Mr Griffin or Ms Wilson at Walnut Tree or Mr Lemmon at Brooklands.

Media Studies

A Level

Exam Board: AQA



When studying Media Studies, students will analyse and evaluate a variety of media products, and consider a wide range of media theory. Students explore contemporary, diverse topics and learn to develop research skills alongside a focus on independent creativity during the NEA project. Media Studies also offers students the chance to refine their debating skills through the discussion of the ways contemporary issues are presented in the media from a range of perspectives. Media Studies is a diverse and dynamic subject, and can be complemented by many other subjects such as English Language, English Literature, and Sociology.

Course Content

Media One: This unit focuses on Media Language, Media Representations, Media Industries and Media Resources. Whilst studying this unit, students will develop the ability to closely analyse and compare media products in relation to relevant key social, cultural, economic, political and historical contexts. The unit is assessed through one written examination.

Students will study the following aspects of media:

- ◆ Advertising and Marketing
- ◆ Music Videos
- ◆ Radio
- ◆ Newspapers
- ◆ Film

Media Two: This unit focuses on the in-depth media forms of television, magazines, online, social and participatory media, and video games. Students will here employ their analytical and evaluative skills to consider the impacts of a range of media products, such as video games and television, on the lives of those who consume them. The unit is assessed through one written examination.

Non-Exam Assessment: Creating a cross-media production

This element of the course requires students to apply their knowledge and understanding of the theoretical framework of media studies to create a cross media product using two of the following forms:

- ◆ Television
- ◆ Music Video
- ◆ Radio
- ◆ Newspapers
- ◆ Magazines
- ◆ Advertising/Marketing
- ◆ Online, Social and Participatory Media
- ◆ Video Games

Exam Structure

- ◆ **Media One**
Written examination 35%
- ◆ **Media Two**
Written Examination 35%
- ◆ **Non-Exam Assessment**
Creating a cross-media production 30%

Which Doors Will Be Opened?

A qualification in Media Studies can lead to a wide range of opportunities in Media, the Arts, and Communication at degree level. As a subject that emphasises creativity, evaluative thought, and the ability to communicate effectively, Media Studies is welcomed as a qualification for many university courses and careers.

Extras

To support the study of media in its many forms, where possible, we offer screenings of relevant documentaries and films. There is also, where possible, the opportunity to attend academic Media conferences aimed at Post 16 students, as well as visits from experienced speakers in the field of media.



For more information, please contact Miss Treadwell at Walnut Tree or Mrs Hake at Brooklands.

Music

A Level

Exam Board: AQA



This course extends the GCSE skills of Performing, Composing and Appraising in ways that emphasise their interdependence. There are no limits on the instruments (or voices) and types of repertoire which may be presented in performance and the study of the widest possible range of music, including folk, popular and classical traditions of non-Western origin as well as those of jazz and Western classical and popular traditions, is encouraged. You do not have to have studied GCSE music but you will need to be proficient on your instrument to at least Grade 3/4 standard and be regularly performing. An understanding of music theory to Grade 3 is also advisable. Year 12 and 13 are taught together to enable full ensemble performances to be delivered.

Course Content

The A level is made up of three units of performing, composing, appraising music. Every lesson will involve performing and composing music, exploring the skills required to be the musicians of the future.

Performance 35%

- ◆ Solo and/or ensemble performing as an instrumentalist, or vocalist and/or music production (via technology).
- ◆ Recital minimum of ten minutes and three contrasting pieces.

Composition 25%

- ◆ Composition 1: Composition to a brief.
- ◆ Composition 2: Free composition.
- ◆ A minimum of four and a half minutes of music in total is required.
- ◆ We use Sibelius and Logic to store and develop creative ideas mixing audio and midi. Compositions may be performed live and recorded.

Appraising Music 40%

- ◆ Analysing and evaluating music.
- ◆ Popular Music: Stevie Wonder, Beyoncé, Daft Punk, Labrinth, Joni Mitchell, Muse.
- ◆ Music for Theatre: Sondheim, Schoenberg, Lloyd Webber, Weill, Robert Brown.
- ◆ Baroque: The solo concerto.
- ◆ Classical: The operas of Mozart.
- ◆ Romantic: The piano music of Chopin, Brahms and Grieg.
- ◆ Familiar and unfamiliar pieces: There are questions in 3 sections. Section A: Listening, Section B: Analysis, Section C: Essay.

Exam Structure

- ◆ Performing is assessed by video recording.
- ◆ Composing is assessed by a portfolio of compositions accompanied by a score, lead sheet or written description.
- ◆ Listening/Analysing is assessed by a written exam.

Which Doors Will Be Opened?

Many subjects combine well with Music, from a wide range of Humanities and Languages as well as Mathematics and Science. A level music is a rigorous academic subject which sets students up well for university study, and universities are aware of this. Music is a hugely diverse industry, with positions for skilled musicians spanning areas ranging from producing and mixing to performance and orchestration. Possible careers include A&R representative, music therapist, composer, instrumentalist, teacher, journalist, record producer, librarian, conductor and session musician.



Extras

As Music students at Walton High you will have the opportunity to work in our recording studio and theatre. These facilities offer state-of-the-art equipment that will enable you to gain excellent experience for working in this field. All students will be expected to get involved with the successful enrichment programme we offer, including the WHO - Walton High Orchestra and our Choir - Chorelli.

Students will have the opportunity to perform in a regular cycle of concerts held throughout the year, including the Post 16 recital evening. We also regularly visit concerts with recent trips to the Royal Albert Hall and the South Bank Centre.

For more information, please contact Mr Daggett at Walnut Tree or Miss Hall at Brooklands.

Physics

A Level

Exam Board: OCR A



Physics allows students to learn how to apply maths to real-world problems and explore new areas of study, perhaps more importantly, also developing skills that can be transferred to just about any other area of work, from setting up a business to saving the planet. Even if one doesn't go on to become a physicist, learning to think like one will help get to the root of any problem and draw connections that aren't obvious to others.

Course Content

- ♦ **Module 1:** Development of Practical Skills
- ♦ **Module 2:** Foundation of Physics
- ♦ **Module 3:** Forces and Motion
- ♦ **Module 4:** Electrons, Waves and Photons
- ♦ **Module 5:** Newtonian World and Astrophysics
- ♦ **Module 6:** Particle and Medical Physics

Exam Structure

(% weighing each component counts towards the final grade)

- ♦ **A Level Paper 1**
Assesses the content from Modules 1, 2, 3 and 5 (37%)
- ♦ **A Level Paper 2**
Assesses the content from Modules 1, 2, 4 and 6 (37%)
- ♦ **A Level Paper 3**
Assesses the content from Modules 1 to 6 (26%)

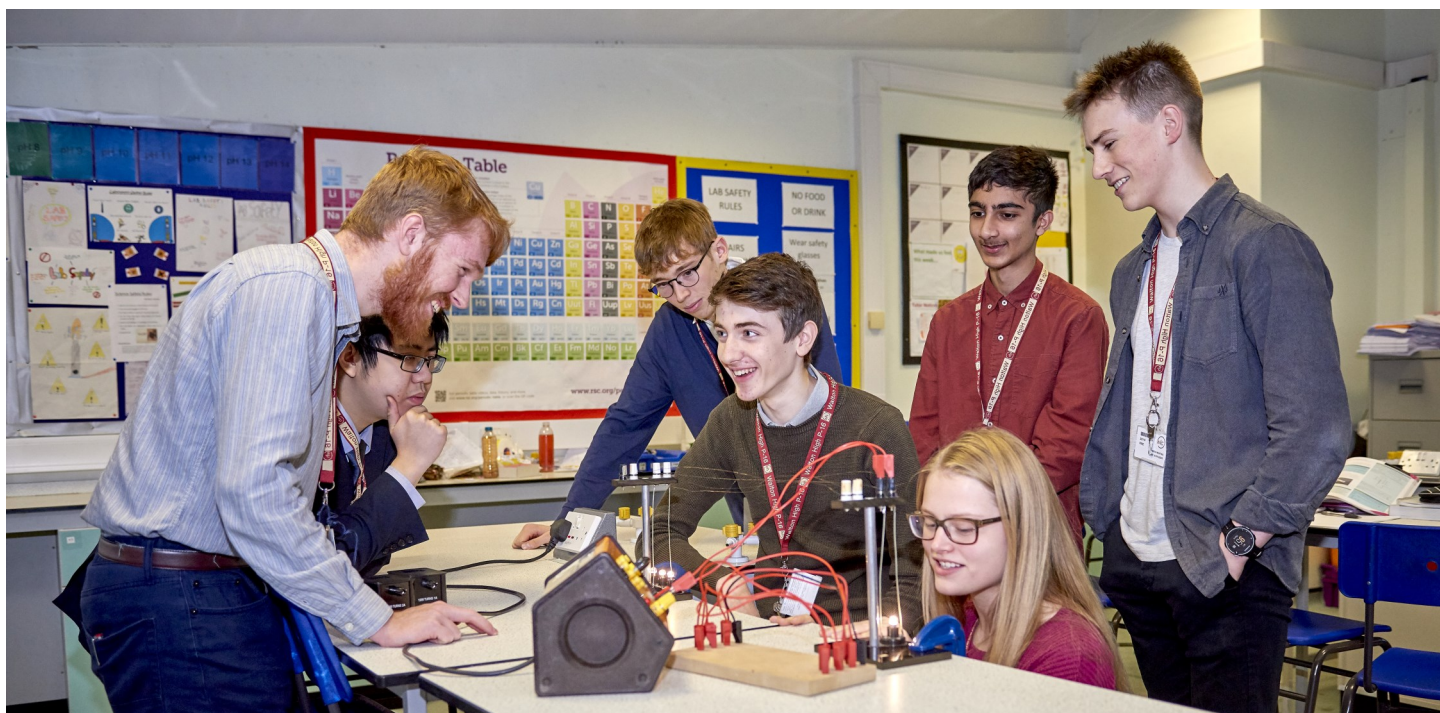
Which Doors Will Be Opened?

Physics A level is a vital qualification for a career in, amongst others, all types of engineering as well as architecture and design. It is also a strong supporting subject in many scientific, medical and non-scientific careers. As a result it links well with any of the other science A levels and with Maths, Geography, ICT and Business Studies.

Extras

The A level Physics students contribute to the enrichment programmes and benefit as well from these. One Advanced Learning Day is dedicated to the application of research in a project work. They also participate in trips to universities, and other places relevant to their pursuits. The students get access to the educational journals to support topics outside the curriculum. A level Physics students also share in the mentoring of students in KS3 and KS4 and help to run the taster courses for Year 11. A STEM ambassador from Oxford University has been assigned to work with students on current topics of interest.

For more information, please contact Mr Lund at Walnut Tree or Mrs Pearmain at Brooklands.



Politics

A Level

Exam Board: Edexcel



Politics examines the world in which we live, who has power, who makes decisions, who participates and what our rights are. Students study how the UK political systems works, including Parliament, the Prime Minister and the Supreme Court, followed by a study of the US system of government, with a comparison between the US and UK systems. Politics is a lively and ever changing subject with opportunities to debate and discuss and to understand the different viewpoints held by people involved in decision-making.

Course Content

50% of A level Politics, will be on British politics the remainder will be on political ideas and American politics. This includes the following content in Years 12 and 13:

- ◆ How democracy operates in the UK, how effective it is and how it could be improved.
- ◆ The views of the different political parties and what their policies are.
- ◆ The voting systems used in elections to the Westminster Parliament and the devolved bodies.
- ◆ How British government is structured and how Parliament operates.
- ◆ The role of the Prime Minister and Cabinet and their relationship with Parliament.

The course will also cover the following political ideologies that form the basis of many political movements and parties around the world:

- ◆ Liberalism
- ◆ Conservatism
- ◆ Socialism
- ◆ One other political ideology – Anarchism

In American politics students cover:

- ◆ The nature of the US Constitution and the aims of the Founding Fathers.
- ◆ The powers of President and Congress's ability to control him.
- ◆ The role of the US Supreme Court.
- ◆ The nature of US presidential and congressional elections.
- ◆ US voting behaviour and the differences between the Democrat and Republican parties.
- ◆ Comparative US and UK politics.

Exam Structure

There are three two hour exam papers. Paper 1: UK Politics are core ideologies. Paper 2: UK Government and non-core ideology. Paper 3: US and Comparative to UK.

Which Doors Will Be Opened?

With a qualification in Politics, one can go onto higher education or work in a variety of different fields including journalism, politics, law, the civil service, business and education. The subject is a useful complement to the study of A level History, English, Sociology, Law and Philosophy.

Extras

The course will include a visit to Westminster to tour both Houses of Parliament, the Supreme Court and to local government offices. In addition, there will be opportunities to meet local MPs and hear speakers from political parties, pressure groups, members of the House of Lords and the Civil Service. There is the possibility of a trip to Washington D.C.

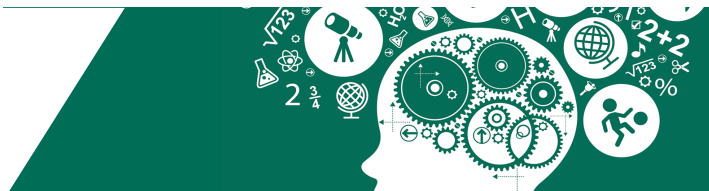


For more information, please contact Miss Toseland at Walnut Tree or Mrs Gifford at Brooklands.

Psychology

A Level

Exam Board: Edexcel



Psychology is the study of human thought, feelings, emotions and behaviour. This course aims to give students an understanding of the major psychological approaches and their applications. Throughout, students learn about psychological research methods and ethics which they are expected to apply to their own work. A level Psychology will provide the skills required of an undergraduate - an inquiring mind and the ability to use scientific research findings to support and challenge various claims about why people behave the way that they do.

Course Content

- ◆ **Paper 1:** Foundations in Psychology - social, cognitive biological psychology and theories of learning.
- ◆ **Paper 2:** Applications in Psychology - clinical and child psychology . This unit examines mental health disorders and the development of the child from birth to adulthood.
- ◆ **Paper 3:** Psychological Skills - a synoptic unit that focusses the methodology and skills psychologists use.

Each of the exam papers has a mixture of content, methods and mathematical skills, studies, a key question and practical investigation.

Exam Structure

The exams consist of structured questions of varying length requiring knowledge, understanding, evaluative skills and application of material covered. Each of the three exam papers is two hours in length.

A level students will conduct practical investigations. Students will then be asked to apply this practical knowledge to novel situations in the examinations.

Which Doors Will Be Opened?

Psychology has close ties with a range of disciplines. Subjects that go well with Psychology include other Social Sciences, Biology, English, Maths and Philosophy. Students of Psychology may use their qualification to study the subject or related disciplines at a higher level. Professional psychologists work in a number of settings including education, health care, marketing and human resource management.

Extras

Students have engaged in a range of extra curricular activities and we hope to offer these opportunities in future years:

- ◆ When studying cognitive psychology, students have the opportunity to take part in a Dementia Friends session allowing them to apply their knowledge of memory.
- ◆ Students have attended a research methods day at Northampton University where they worked with lecturers to plan their own investigations, analyse results and present their findings.

For more information, please contact Mrs Hutchinson.



Religion, Philosophy and Ethics

A Level

Exam Board: Pearsons Edexcel



Students who choose to take Philosophy at A level will study the Religious Studies course, provided by the Pearson Edexcel examining body. The course content is studied over two years and is divided as outlined below.

Philosophy works well with a variety of subjects. In the past we have had many successful students who have also been studying Psychology, Sociology, Law, English, History and the Sciences. Many famous philosophers were also mathematicians such as Descartes and Pascal. Previous students have continued to study at university, reading courses, such as Philosophy, Theology, Art, Business and PPE. Students have gone on to work in a wide range of professions such as youth work, law, human rights, the arts and politics.

Paper 1: Philosophy of Religion (2 hours)

- ◆ Topic 1: Philosophical Issues and Questions
- ◆ Topic 2: The Nature and Influence of Religious Experience
- ◆ Topic 3: Problems of Evil and Suffering
- ◆ Topic 4: Religious Language
- ◆ Topic 5: Works of Scholars
- ◆ Topic 6: Influences of Developments in Religious Belief

Paper 2: Religion & Ethics (2 hours)

- ◆ Topic 1: Significant Concepts in Issues or Debates in Religion and Ethics
- ◆ Topic 2: A Study of Three Ethical Theories
- ◆ Topic 3: Application of Ethical Theories to Issues of Importance
- ◆ Topic 4: Ethical Language
- ◆ Topic 5: Deontology, Virtue Ethics and Works of Scholars
- ◆ Topic 6: Medical Ethics: Beginning and End of Life Issues

Paper 3: New Testament Studies (2 hours)

- ◆ Topic 1: Social, Historical and Religious Context of the New Testament.
- ◆ Topic 2: Texts and Interpretation of the Person of Jesus
- ◆ Topic 3: Interpreting the Text and Issues of Relationship, Purpose and Authorship
- ◆ Topic 4: Ways of Interpreting the Scripture
- ◆ Topic 5: Texts and Interpretation
- ◆ Topic 6: Scientific and Historical Critical Challenges, Ethical Living and the Works of Scholars

Exam Structure

- ◆ Paper 1: Philosophy of Religion (80 marks)
- ◆ Paper 2: Religion & Ethics (80 marks)
- ◆ Paper 3: New Testament Studies (80 marks)

The main difference between A level and GCSE is the skills. The content you will study is mostly new and is also in more detail than it is at GCSE. In addition to this the skill of analysis is harder. You will be expected to analyse and critically discuss different theories and to assess the strengths and weaknesses of the views you are presented with.

Why Philosophy?

Walton High boasts a team of subject specialists teachers, which is rare for this subject. We also provide a number of opportunities for you to gain additional skills and experience outside of lessons such as attending Masterclasses run by experts in the field, as well as opportunities to be involved in mentoring younger Religious Studies students.

Which Doors Will Be Opened?

Philosophy is a well-respected subject and is highly regarded by universities as a useful foundation for the study of many subjects including law, medicine and the social sciences. The skills and core knowledge gained within the subject would also support those studying English Literature, History or Classics. This course can lead to a wide variety of careers. You will be well prepared for any job which demands good verbal skills, ethical decision making and clear written communication.



For more information, please contact Mrs Ehioze-Ediae at Walnut Tree or Dr Henry or Mrs Cartwright at Brooklands.

Sociology

A Level

Exam Board: AQA



Sociology is the study of social groups and behaviours. It examines how society influences individuals but also how individuals shape society. Students will learn how sociologists have developed theories and concepts to explain how society works. Feminist, Functionalist and Post modernist approaches will be used during the duration of the course to examine a range of social behaviours and social issues. Students will also use these theories to suggest solutions to societal problems in modern society.

Course content

- ◆ **Paper 1: Education with Theory and Methods.**
Examines the role of education in modern society and examines the relationship between educational achievement and social class, gender and ethnicity; and sociological methods. Theory and Methods builds on previous knowledge of research methods and explores these in relation to education.
- ◆ **Paper 2: Topics in Sociology.** Students study the unit Culture and Identity. This explores the diversity of cultures within a society as well as comparing different cultures around the world. The unit explores the concepts surrounding where our identities come from. Students also study Mass Media. This examines a range of theoretical approaches to the study of mass media including; the relationship between ownership and control of the media, globalisation and popular culture, the selection and presentation of the content of news, media representations of age, social class, gender, sexuality, disability and ethnicity.
- ◆ **Paper 3: Crime and Deviance with Theory and Methods.** Explores the social distribution of crime and deviancy in terms of age, ethnicity and gender; and examines different theories of crime, deviance, social order and social control. This unit also looks at victimology, which explores the impact of crime from the victims perspective and what can be done by the Criminal Justice System to support victims after a traumatic experience. Theory and Methods builds on previous study of methods and explores these in relation to crime and deviance.

Paper Weighting

A level students complete three written exams. Each is worth 80 marks and the time given for each paper is two hours. Upon completion students will get an overall mark and grade out of 240. This means each paper is worth 1/3 of their overall grade.

Links to other subjects

Sociology links well to a range of other subjects, including Government and Politics, Psychology, Economics, English Literature, Geography, History and Law.

Extra activities

- ◆ Support sessions
- ◆ A Social Science Club

Which doors will be opened?

The insights gained into modern society and the experience of research methods will be useful for entry into many professions including; work in the criminal justice system, social psychology, law, journalism, administration, research, advertising and media. Sociology can be studied at degree level on its own or combined with other disciplines. It is often combined with Psychology, Criminology or Politics.



For more information, please contact Mr Tyrrell at Walnut Tree or Mrs Campbell at Brooklands.

Spanish

A Level

Exam Board: AQA



A level Spanish encourages maximum use of the language, with lessons normally conducted in the foreign tongue. The course is designed to enable you to develop and build on the skills acquired at GCSE, and to provide a much deeper insight into Hispanic culture and society. Choosing to study Spanish you will achieve a practical language skill in a variety of contexts and registers, whilst being offered an intellectual challenge: the skills of analysing and expressing ideas and arguments coherently and accurately both in essays and orally are developed.

Course Content

In Year 12 Spanish, students study:

Students study all sub-themes in relation to any Spanish-speaking country or countries.

- ◆ Modern and Traditional Values (Los valores tradicionales y modernos)
- ◆ Cyberspace (El ciberespacio)
- ◆ Equal Rights (La igualdad de los sexos)
- ◆ Spanish Regional Identity (La identidad regional en España)
- ◆ Cultural Heritage (El patrimonio cultural)

Students will also study one literary text or film from the AQA prescribed list as well as beginning preparation of their Independent Research Project (IRP) in the latter part of the year. The summer holidays will provide a useful opportunity to compile research materials and gather information.

In Year 13 Spanish, students study:

- ◆ Immigration (La inmigración)
- ◆ Racism (El racismo)
- ◆ Integration (La convivencia)
- ◆ Monarchies and Dictatorships (Monarquías y dictaduras)
- ◆ Popular Movements (Movimientos populares)
- ◆ A Second Literary Text or a Film



Exam Structure:

There are 3 components to the A level examination:

- ◆ **Paper 1:** Listening, Reading and Writing (50% of the A level): written exam, where students have control of the recording for the Listening section.
- ◆ **Paper 2:** Writing (20% of A level): written exam based on the literary and/or filmic works studied.
- ◆ **Paper 3:** Speaking (30% of A level): Individual Research Project and one of four themes discussed.

Which Doors Will Be Opened?

Studying Spanish at A level will provide students with a sound basis for further study and enhance their employment prospects. Beyond the language competency, transferable skills are acquired such as autonomy, resourcefulness, creativity, critical thinking and linguistic, cultural and cognitive flexibility. The skills gained will open doors to further study and work opportunities. Language skills are highly sought after both by universities and employers alike, and are a great asset in fields ranging from Arts to Law, from Business to Science, from History to Engineering. After the course, one might use foreign language sources for university essays or giving presentations to international business partners. Previous students of Spanish have studied abroad or pursued language studies, international law and business degrees.

Extras

Students are strongly encouraged to read or listen to Spanish media regularly. Furthermore, students will be provided with opportunities to expand their socio-cultural knowledge beyond the specification, through watching additional films, for example, and to support younger students of Spanish through peer mentoring. Where possible, students choosing to study Spanish are encouraged to take part in a visit abroad during the course of their study. We are able to support students with details of organisations that could facilitate this if necessary. Where appropriate, opportunities to attend lectures on the works studied will be available.

For more information, please contact Mrs Gatley at Walnut Tree or Miss Amara at Brooklands.

Applied General/Technical Courses



Applied Law.....	Level 3 Applied General	27
Applied Psychology.....	Level 3 Applied General	28
Applied Science.....	Level 3 Applied General	29
Art & Design.....	Level 3 Applied General	30
Business.....	Level 3 Applied General	31
Children’s, Play, Learning and Development.....	Level 3 Applied General	32
Creative Media Production.....	Level 3 Applied General	33
Health & Social Care.....	Level 3 Applied General	34
ICT.....	Level 3 Technical	35
Performing Arts.....	Level 3 Applied General	36
Sport and Physical Activity.....	Level 3 Technical	37

Applied Law

Level 3 Applied General
Exam Board: Edexcel



This qualification is for Post 16 learners who want to continue their education through applied learning and to progress to higher education and ultimately to employment, possibly in the legal sector. It aims to give a coherent introduction to study of the legal sector. It is designed to be taken as part of a programme of study that includes other appropriate BTEC Nationals. It provides the basis of an excellent route for learners to pursue a career in the legal sector, higher education (degrees in Business and Law) or through an Advanced Apprenticeship in Legal Services.

Extended Certificate - Mandatory Units

Dispute Solving in Civil Law	▲
Investigating Aspects of Criminal Law and the Legal System	■
Applying the Law	▲

Extended Certificate - Specialist Units

Contract Law	■
--------------	---

Dispute Solving in Civil Law: In this unit, you will learn about the courts that deal with civil law disputes, in addition to alternative methods of resolution. The basic principles of the law of negligence are considered and applied, together with sources of advice, funding, resolution and remedies. You will develop legal skills in research and will use these research skills to investigate the way in which the law is developed and applied through precedent. You will learn how to reference legal sources and how to communicate professionally with colleagues and clients.

Investigating Aspects of Criminal Law: In this unit, you will develop the skills to investigate and research how different laws are made both inside and outside Parliament and then interpreted in courts. You will use these research skills to investigate the way in which the law is developed and applied. You will investigate who decides the outcome of criminal cases and where advice and representation can be obtained and how it can be paid for. You will apply and present this information professionally to clients with the aid of non-fatal offence case studies.



Applying the Law: A task set and marked by Pearson and completed under supervised conditions. Learners are given information about two cases two weeks before a supervised assessment period in order to carry out research.

Aspects of Contract Law: In this unit, you will learn about the rules in relation to setting up a contract and how the contract is completed. You will study the terms that can be found in standard form contract and the ways parties to a contract can exercise their rights. You will investigate the remedies that are available when terms in a contract are breached.

Assessment Type

There are three types of assessment in the course.

Assignment set and marked by Walton High staff, moderated by Edexcel	■
Task set and marked by Edexcel	●
Written exam set and marked by Edexcel	▲

Which Doors Will Be Opened?

The qualification is equivalent to A level and carries UCAS points and if it is taken alongside other qualifications as part of a two-year programme of learning, then it is recognised by higher education providers as contributing to meeting admission requirements for many courses. It will support entry to many higher education courses, depending on the other qualifications learners have taken. Learners should always check the entry requirements for degree programmes with specific higher education providers. The qualification can also support progression to employment directly or via an Apprenticeship.

Extras

Students who study Law are encouraged to join additional enrichment, such as debate club. A Law trip to see the Courts and Parliament is offered and guest speakers such as Solicitors come in to talk to students about the legal profession.

For more information, please contact Mrs Penaligon at Walnut Tree or Mr Yearwood or Miss Clarke at Brooklands.

Applied Psychology

Level 3 Applied General

Exam Board: Edexcel



Psychology is the scientific study of human thought, feelings, emotions and behaviour. Applied Psychology will allow students to learn about key concepts in psychology and apply them to real life settings. It aims to provide students with an understanding of a variety of approaches to psychology, opportunities to explain a variety of behaviours using theories and research and think critically about these explanations. Students will also have the opportunity to complete their own research.

Extended Certificate - Mandatory Units

Psychological Approaches and Applications	▲
Conducting Psychological Research	■
Health Psychology	▲

Extended Certificate - Optional Units

Criminal and Forensic Psychology, Promoting Children's Psychological Development, Introduction to	■
---	---

Psychological Approaches and Applications: In this unit, students are introduced to key ideas from different approaches, and learn about the assumptions of the Cognitive, Social, Learning and Biological approaches. Students develop an understanding of how psychological approaches research and concepts can explain gender, aggression and consumer behaviour.

Conducting Psychological Research: In this unit, students learn about the importance of psychological research and the types of research that take place. Students learn how to plan a pilot study and conduct a pilot study applying knowledge gained in this unit to a chosen area from key psychological approaches. Data is collected and analysed and used to present findings before students reflect on their own learning of the research process.



Health Psychology: In this unit, students learn about approaches and theories that explain why an individual may engage in specific behaviours such as lifestyle choices, healthy and unhealthy behaviours, and critically evaluate them to reach informed judgements. Students explore how health psychologists can improve health behaviours using treatments and will make judgements about their effectiveness.

Optional Unit: Criminal and Forensic Psychology is the optional unit we have selected for students to study. Students will complete an assignment based on the unit studied.

Assessment Type

There are three types of assessment in the course.

Assignment set and marked by Walton High staff, moderated by Edexcel	■
Task set and marked by Edexcel	●
Written exam set and marked by Edexcel	▲

Which Doors Will Be Opened?

The qualification carries UCAS points and is recognised by higher education providers. Students that study Applied Psychology may use their qualification to study the subject at a higher level or a related subject. An understanding of human behaviour is fundamental to many careers. Students will be consistently applying their knowledge to a range of contexts such as health care, education and business settings and students may wish to pursue a career in these sectors.

Extras

Psychology students have a range of opportunities to apply their knowledge to real life settings. Students can help support younger students in lessons, attend a Dementia Friends sessions and have the opportunity to apply their knowledge of research methods to a research day at Northampton University.

For more information, please contact Mrs Hutchinson.

Applied Science

Level 3 Applied General

Exam Board: Pearson



This Applied Science qualification is designed for anyone who sees their future career in Science. It covers a wide range of topics across Biology, Chemistry and Physics and allows students to acquire a high level of practical laboratory skills from which the theory is then drawn.

Diploma - Mandatory Units

Principles and Applications of Science 1	▲
Practical Scientific Procedures and Techniques	■
Science Investigation Skills	▲
Laboratory Techniques and their Application	■
Principles and Applications of Science 2	▲
Investigative Project	■

Diploma - Optional Units

Units may be subject to change

Physiology of Human Body Systems	■
Genetics and Genetic Engineering	■

Extended Diploma - Mandatory Units

Principles and Applications of Science 1	▲
Practical Scientific Procedures and Techniques	■
Science Investigation Skills	▲
Laboratory Techniques and their Application	■
Principles and Applications of Science 2	▲
Investigative Project	■
Contemporary Issues in Science	●

Extended Diploma - Optional Units

Physiological of Human Body Systems	■
Electrical Circuits and their Application	■
Genetics and Genetic Engineering	■
Biomedical Science	■
Forensic Evidence, Collection and Analysis	■
Astronomy and Space Science	■

Assessment Type

There are three types of assessment in the course.

Assignment set and marked by Walton High staff, moderated by Pearson	■
Task set and marked by Pearson (Pre-released Controlled Assessment)	●
Written exam set and marked by Pearson	▲



Exam Structure

- ◆ **Diploma:** Three Exam Based Units and Five Coursework Units. Exam units account for 46% of the course
- ◆ **Extended Diploma:** Four Exam-Based Units and Nine Coursework Units Exam units account for 42%

Which Doors Will Be Opened?

Completion of the course will enable students to pursue a career as a science technician in a laboratory or progress to a higher education qualification such as an HNC, HND or university degree and go on to a career in nursing, radiography, pharmacy, chemical engineering, biochemistry, veterinary science or forensics. Applied Science is a work related qualification designed to accommodate the needs of employers as well as allowing progression to higher education.

Extras

Unique opportunities of the course include; being able to study forensics, astronomy and several other specialised topics that are not covered in any other Post 16 course. There is scope to visit CERN in Switzerland, Amey recycling centre, The Open University Genetics Lab and a power station. Students can expect a range of hands-on laboratory techniques that are directly linked to different areas of industry.

For more information, please contact Mrs Pearmain at Brooklands.

Art & Design

Level 3 Applied General

Exam Board: Pearson Edexcel



This qualification is designed to encourage a broad approach to the many facets of Art, Craft and Design. This will develop a sound grounding in a number of developmental areas while still exploring different media in depth. The specification builds on the skills, knowledge and understanding acquired at KS4.

Extended Certificate - Mandatory Units

Visual Recording and Communication	●
Critical and Contextual Studies in Art	●
The Creative Process	■

Extended Certificate - Optional Unit

Fine Art	■
----------	---

Diploma - Mandatory Units

Visual Recording and Communication	●
Critical and Contextual Studies in Art	●
The Creative Process	■
Materials, Processes & Techniques	■
Developing an Art & Design Portfolio	■
Developing & Realising Creative Intentions	●

Diploma - Optional Units

Fine Art	■
3D	■

Extended Diploma - Mandatory Units

Visual Recording and Communication	●
Critical and Contextual Studies in Art	●
The Creative Process	■
Materials, Processes & Techniques	■
Developing an Art & Design Portfolio	■
Developing & Realising Creative Intentions	●
Managing a Client Brief	●

Extended Diploma - Optional Unit

Fine Art	■
3D	■
Surface Pattern Design	■
Painting	■
Printmaking	■
Public Art	■

Assessment Type

Assignment set and marked by Walton High staff, moderated by Edexcel/Pearson	■
Task set and marked by Edexcel/Pearson (Pre-released Controlled Assessment)	●

Units may be subject to change.

Exam Structure

Level 3 Extended Certificate/Diploma/Extended Diploma subjects are awarded either Pass, Merit, Distinction or Distinction*. The Certificate is equivalent to one A level, the Diploma is equivalent to two A levels and the Extended Diploma is equivalent to three A levels.

Which Doors Will Be Opened?

The study of Art and Design opens many doors into both employment and higher education. Careers in graphic design, architecture, textiles, fashion, interior design, ceramics, art history, printmaking, teaching and many others can be followed with qualifications in Art and Design. As a creative subject, with such a variety of areas within the Art and Design field, the choices for careers are vast.

Extras

Students have access to a range of enrichment promotion through exhibitions and displays, Advanced Learning Days, after school events and trips. Students also have the opportunity to become student ambassadors for the subject, supporting in a wide range of school activities.



For more information, please contact Mrs Carpignani at Walnut Tree or Mr Goodman at Brooklands.

Business

Level 3 Applied General
Exam Board: Pearson



Level 3 BTEC Business offers learners modern, work-related qualifications which open doors to higher education, apprenticeships and industry because they are each designed with a clear purpose to support defined progression routes into higher education or employment. Level 3 business enables students to build high-level skills such as teamwork, creative thinking and presentations skills and develop independent research and study skills essential for success at university.

Extended Certificate - Mandatory Units

Exploring Business	■
Developing a Marketing Campaign	●
Personal and Business Finance	▲

Extended Certificate - Optional Units

Recruitment and Selection Process	■
Investigating Customer Service	■

Diploma - Mandatory Units

Exploring Business	■
Developing a Marketing Campaign	●
Personal and Business Finance	▲
Managing an Event	■
International Business	■
Principles of Management	●

Diploma - Selection of Optional Unit

Recruitment and Selection Process	■
Team Building in Business	■
Recording Financial Transactions	■
Investigating Customer Service	■
Digital Marketing	■
Creative Promotion	■

Assessment Type

There are three types of assessment in the course.

Assignment set and marked by Walton High staff, moderated by Pearson	■
Task set and marked by Pearson (Pre-released Controlled Assessment)	●
Written exam set and marked by Pearson	▲



Exam Structure

The course combines internal and external assessment. Level 3 BTECs are awarded either Pass, Merit or Distinction/Distinction*. The Extended Certificate consists of 4 units with 50% assessed externally and is the equivalent to 1 A level and the Diploma consists of 8 units with 37.5% assessed externally and is equivalent to 2 A levels.

Which Doors Will Be Opened?

Level 3 BTEC National in Business supports progression into Higher education courses in Business, Accounting, Economics, Leisure & Tourism, Retail, Sales and Marketing. The course will also allow for direct entry into employment in a variety of roles such as Marketing, Human Resources, Accounting and Business Administration.

Extras

We offer a range of activities to enhance the course. We involve local businesses in project work and arrange visits to look at how business theory is applied 'in the real world'. Students will also have the opportunity to take part in the Mentoring; ALD's; Young Enterprise Company Scheme, NatWest Business Challenge; various Trips e.g. Frankfurt/Brussels; Employability Clinic; Guest Speakers' lectures and live Skype seminars with well known members of the international business community.

For more information, please contact Mr Bessong at Walnut Tree or Mr Dannell at Brooklands.

Children's Play, Learning and Development

Level 3 Applied General
Exam Board: Pearson



Children's Play, Learning and Development is the perfect foundation for students wishing to pursue a career working with children aged 0-8 in the childcare sector. Aspiring nursery nurses, childminders, early years and foundation stage teachers and those wanting to specialise in early years special educational needs will gain the skills and knowledge required to fulfil these job roles and continue on to study in their chosen field at a higher level.

Extended Certificate - Mandatory Units

Unit 1 - Children's Development	▲
Unit 2 - Development of Children's Communication, Literacy & Numeracy Skills	▲
Unit 4 - Enquiries into Current Research in Early Years Practice	●
Unit 3 - Play and Learning	■
Unit 5 - Keeping Children Safe	■
Unit 6 - Children's Physical Development, Care & Health Needs	■
Unit 7 - Children's Personal, Social & Emotional Development	■
Unit 8 - Working with Parents and Others in Early Years	■
Unit 9 - Observation, Assessment and Planning	■
Unit 10 - Reflective Practice	■
Unit 11 - The Early Years Foundation Stage	■

Extended Certificate - Optional Units

Unit 12 - Children's Development Outdoors	■
Unit 13 - Healthy Eating in Early Years	■
Unit 12- Children's Imaginative Play and Creativity	■
Unit 20 - Career Development in the Early Years Sector	■

Optional units are subject to change.

Assessment Type

There are three types of assessment in the course.

Coursework set and marked by Walton High staff	■
Controlled assessment set and marked by Pearson	●
Written exam set and marked by Pearson	▲

Course Structure

Students study a range of core, mandatory and optional units and will be assessed using a broad range of assessment methods; practically through witness statements and observations and also academically through written reports. This combination aims to give students the confidence to apply their knowledge to real life scenarios to succeed in the workplace, and to gain the study skills required to continue to higher education. The range of vocationally relevant assessments also means students can showcase their learning and achievements to best effect when they take their next step. Students are also required to complete 750 hours of work experience in a range of childcare settings as part of the course, equipping learners with the professional qualification they require to practice in the sector, known as EYE status (early years educator). This not only ensures employment but also allows students to make links between theory and practice. A key feature is the opportunity throughout the duration of the programme for students to produce a personal & professional portfolio of evidence to support their application of practical knowledge.

Which doors will be opened?

The Level 3 BTEC in Children's Play, Learning & Development has been developed to allow students transition into employment in the early years sector. With the professional qualification and successful completion of their course, students count in ratio as a Level 3 qualified childcare practitioner. The course also supports progression to higher education to study early years or primary school teaching.

Extras

Students also have the opportunity to participate in fund raising, advanced learning days such as; trips to the museum of childhood & the nursery world show, paediatric first aid, practical activity planning, mentoring and support opportunities. Students can expect a range of guest speakers from and visits to local childcare settings including; the Montessori school approach, forest schools and outdoor led learning, as well as experts from local childcare agencies.

For more information, please contact Miss Oatham.

Creative Media Production

Level 3 Applied General

Exam Board: Pearson



The Pearson BTEC National in Creative Digital Media Production focuses on providing vocationally related education and training for those who are intending to work in the media industries. It provides opportunities for students to develop skills, knowledge and understanding relevant to the media industries in an applied learning context and gives them the opportunity to develop a range of skills and techniques, personal skills and attitudes essential for successful performance in working life.

Diploma - Mandatory Units

Digital Media	●
Media Enterprise	■
Responding to a Commission	●
Film Production - Fiction	■

Diploma - Optional Units

Storyboarding for Digital Media	■
Scriptwriting	■
Single Camera Techniques	■
Film Editing	■
Sound Editing	■
Lighting Techniques	■

***Those highlighted in yellow equate to the Extended Certificate (5 units), all units contribute towards the Diploma (10 units).**

Assignment set and marked by Walton High staff, moderated by Pearson	■
Task set and marked by Pearson (Pre-released Controlled Assessment)	●

Assessment Type

There are two types of assessment in the course.

Units may be subject to change

Exam Structure

There is no formal examination for the Diploma. However, Units 3 and 8 are set and marked by Pearson. All other units are entirely assignment based and set/marked internally by staff. Units can vary; therefore they can carry a different percentage towards the final grade. Level 3 BTECs are awarded either Pass, Merit, Distinction or Distinction*.

Which Doors Will Be Opened?

The Level 3 BTEC in Creative Digital Media Production has been developed to focus on providing opportunities for full-time specific qualification to enter employment in the media industries or progress to higher education vocational qualifications such as BTEC Higher National Diploma in Media degree.

The Level 3 BTEC Ext Cert offers the same number of UCAS points as one A level.

The Level 3 BTEC Diploma offers the same number of UCAS points as two A levels.

Extras

We offer work with real clients/produce products for companies and specialise in particular skills such as editing or lighting. Students also have access to study support sessions, where they can get additional support and mentoring from their teachers.

For more information, please contact Mr Barnes at Walnut Tree or Mrs Champion at Brooklands.



Health & Social Care

BTEC Level 3

Exam Board: Pearson



Health and Social Care is the perfect foundation for students wishing to pursue a career working with people. Aspiring nurses, midwives, teachers, paramedics, occupational therapists, care assistants, radiographers, social workers and many more, will gain the skills and knowledge required to fulfil these job roles and continue on to study in their chosen field at a higher level. Students will study either an Extended Certificate (equivalent to one A level) alongside two other subjects, a Diploma (equivalent to two A levels) alongside one other subject or an Extended Diploma (equivalent to three A levels).

	Unit number and Title	Extended Certificate	Diploma	Extended Diploma
▲	1 Human Lifespan Development	Y	Y	Y
▲	2 Working in Health and Social Care	Y	Y	Y
▲	3 Anatomy and Physiology for Health and Social Care			Y
▲	4 Enquiries into Current Research in H&SC		Y	Y
●	5 Meeting Individual Care and Support Needs	Y	Y	Y
●	6 Work Experience in Health and Social Care			Y
●	7 Principles of Safe Practice in Health and Social Care		Y	Y
●	8 Promoting Public Health		Y	Y
■	10 Sociological Perspectives		Y	Y
■	12 Supporting Individuals with Additional Needs		Y	Y
■	14 Physiological Disorders and their Care	Y	Y	Y
■	18 Assessing Children's Development Support Needs			Y
■	19 Nutritional Health			Y

▲	Exam unit	●	Mandatory unit (Coursework)	■	Optional unit (Coursework)
---	-----------	---	-----------------------------	---	----------------------------

Course Structure

Students study a range of core, mandatory and optional units and will be assessed using a broad range of assessment methods; practically through witness statements and observations and also academically through written reports. This combination aims to give students the confidence to apply their knowledge to real life scenarios to succeed in the workplace, and to gain the study skills required to continue to higher education. The range of vocationally relevant assessments also means students can showcase their learning and achievements to best effect when they take their next step. Students are required to complete 100 hours of work experience in a Health and Social Care setting, equipping them with practical skills and experience of working in this sector.

Which doors will be opened?

Health and Social Care opens many doors including progression to university to study nursing, midwifery, teaching and more. It supports employment in the Health and Social Care sector; care work, residential care and working with vulnerable people in the communities and also apprenticeships; dental nursing, teaching assistant and so many more.

Extras

Students can expect a range of guest speakers from local health and social care services such as Age UK, Willen Hospice, Medical Detection Dogs and MK social care services. There are also opportunities to complete work placement at Milton Keynes University Hospital, as well as volunteering in the community.

For more information, please contact Mr Ashmore at Walnut Tree and Mrs Smith at Brooklands.

ICT

Level 3 Technical
Exam Board: OCR



Cambridge Technicals are vocational qualifications at Level 3 for students aged 16+. They are designed with the workplace in mind and provide a high-quality alternative to A Levels. This pathway focuses on the design, implementation and management of an organisation's IT Infrastructure. It includes activities and roles that are carried out in the workplace such as selecting hardware and software for clients, and learning how to build, upgrade or develop computer systems and networks that are safe and secure.

Introductory Diploma - Mandatory Units

Fundamentals of IT	▲
Global Information Systems	▲
Computer Networks	■

Assignment set and marked by Walton High staff, moderated by OCR	■
Written exam set and marked by OCR	▲

Introductory Diploma - Optional Units

Systems Analysis and Design	■
Internet of Everything	■

Units may be subject to change.

Assessment Type

There are two types of assessment in the course.

Exam Structure

Units 1 and 2 are exam based units which are externally assessed. The mandatory content contributes 41.7% to the qualification grade. Optional units are 58.3%. The optional units (O) and mandatory (M) are all controlled assessed units/ coursework and are internally assessed and externally moderated. Knowledge gained in the study of these units will also help prepare you for relevant industry qualifications such as CompTIA A+, CompTIA Mobility+, VM Ware and Cisco IT Essentials.



Which Doors Will Be Opened?

This pathway provides an opportunity for progression to the following university courses:

- ◆ Computer Engineering
- ◆ Software Engineering
- ◆ BSc (Hons) in Information Technology

Cambridge Technicals provide a strong base for apprenticeships and the workplace and are recognised for UCAS tariff points.

Extras

Mandatory and relevant work experience placements are required for this course and for passing relevant units, and it is the primary responsibility of students to source this. Employer involvement is also mandatory for this course and we accomplish this through ALDs, invited IT specialist guest speakers, enrichment opportunities and clubs students can get involved with.

For more information, please contact Ms Edike at Walnut Tree or Mr Henley at Brooklands.

Performing Arts

Level 3 Applied General

Exam Board: Edexcel / Pearson



Since 2008 Performing Arts and the Creative Industries have grown at a greater rate (15.6%) and exported at a greater rate (16.1%) than all other industries including manufacturing, financial services and construction (growth at only 5.4% and exports at only 11.5% DCMS 2023). The value to the economy is now £71 billion and the industry employs 22.5 million people, or 1 in 12 of the working population. This course provides a direct route into higher or further education and covers skills needed for immediate employment. Walton High is rare in having a professional theatre on campus backed with a team of professionally trained performing arts teachers.

Diploma - Mandatory Units

Investigating Practitioners' Work	●
Developing Skills and Techniques for Live Performance	■
Group Performance Workshop	●
Performing Arts in the Community	■
Individual Performance Commission	●
Final Live Performance to an Audience	■

Diploma - Optional Units

Movement in Performance	●
Developing the Voice for Performance	■
Acting Styles	●
Variety Performance	■

Extended Diploma - Mandatory Units

Investigating Practitioners' Work	●
Developing Skills and Techniques for Live Performance	■
Group Performance Workshop	●
Performing Arts in the Community	■
Individual Performance Commission	●
Final Live Performance to an Audience	■
Employment Opportunities in the Performing Arts	●

Extended Diploma - Optional Units

Singing Techniques for Performers	●
Developing the Voice for Performance	■
Movement in Performance	●
Physical Theatre Techniques	■
Acting Styles	■
Variety Performance	■

Units may be subject to change

Assessment Type

There are two types of assessment in the course.

Assignment set and marked by Walton High staff, moderated by Edexcel/Pearson	■
Task set and marked by Edexcel/Pearson (Pre-released Controlled Assessment)	●

Exam Structure

Level 3 Applied General subjects are awarded either Pass, Merit, Distinction or Distinction*. The Diploma course is broadly equivalent to two A levels and the Extended course three A levels. In addition we offer an Extended Certificate of Performing Arts, equivalent to one A level, made of three mandatory and one optional unit.

Which Doors Will Be Opened?

Most graduates of Walton High's Performing Arts courses go on to study at top HE institutions such as Guilford School of Acting, Urdang, LIPA, Rose Bruford, RADA and Guildhall and then enjoy a rich career in this industry. Others follow an FE route completing graduate level training before also enjoying successful careers in the performing arts. If students have a passion for singing, dancing or acting; technical or design work; writing or directing, then Walton High Performing Arts will propel them forward. Our students work in the West End, UK and European theatres. They shine in TV, Film, Music, Radio and Media and have also found success in Technical Theatre, Theatre Design, Scriptwriting, Directing and Promotion.

Extras

Students will have access to many enrichment activities including; School Productions, Showcases, Advanced Learning Days, Professional Workshops and Theatre Visits. Students will be expected to be ambassadors for this Curriculum Area at many events that promote, coach and develop the performances of other students. This enhances their skills to become leaders across the school.

For more information, please contact Mr MacBride-Stewart at either campus.

Sport and Physical Activity

Level 3 Technical
Exam Board: OCR



This course teaches students the knowledge required to pursue a career in sport. Students will also develop the skills for a range of sport-related topics from sports coaching to gym management. Students can use this qualification to enter the sport industry or choose to study sport at university or alongside a variety of joint honours degrees alongside journalism, media and business. Practical skills are developed in specialist areas and students learn about the other factors that contribute to improving performance.

Extended Certificate - Units

Sports Coaching and Activity Leadership (M)	■
Sport and Exercise Psychology (O)	■
Performance Analysis in Sport and Exercise (O)	■
Sports Organisation and Development (M)	●
Body Systems and the Effects of Physical Activity (M)	●

Diploma - Units

Sports Coaching and Activity Leadership (M)	■
Sports Injuries and Rehabilitation (M)	■
Practical Skills in Sport and Physical Activities (M)	■
Performance Analysis in Sport and Exercise (M)	■
Physical Activity for Specific Groups (M)	■
Nutrition and Diet for Sport and Exercise * (M)	■
Health and Fitness Testing for Sport and Exercise (O)	■
Working in Active Leisure Facilities* (M)	■
Improving Fitness for Sport and Physical Activity * (M)	■
Organisation of Sports Events (M)	■
Biomechanics and Movement Analysis* (O)	■
Sport and Exercise Psychology (O)	■
Sport and Exercise Sociology* (O)	■
Body Systems and the Effects of Physical Activity (M)	●
Sports Organisation and Development (M)	●
Working Safely in Sport, Exercise and Leisure (M)	●
The Business of Sport* (M)	●

* These units only apply to students taking Extended Diploma

Assessment Type

There are two types of assessment in the course.

Assignment set and marked by Walton High staff, moderated by OCR	■
Written exam set and marked by OCR	●

Exam Structure

The new course has two methods of assessment: internal assignments and written examinations. Written examinations contribute toward.

- ◆ **Extended Diploma:** 30% of the overall grade
- ◆ **Diploma:** 33% of the overall grade
- ◆ **Extended Certificate:** 40% of the overall grade

Which Doors Will Be Opened?

There are many career opportunities that could arise from following this course. Some possible ones include: Exercise Physiologist, Fitness Centre Manager, Personal Trainer, Secondary School Teacher, Sports Administrator, Sports Coach, Sports Development Officer.

This course would work well alongside studying Science (Biology, Chemistry, Physics), Maths, Psychology, Media or Business depending on area of interest.

Extras

Students be expected to get involved in leading/assisting in PE lessons and extracurricular clubs in order to enhance and improve their leadership and coaching skills.

The school invites guest speakers and provides opportunities to work with various sporting institutions that is a requirement of the course and will be experienced within every unit.

Students also have the chance to visit recommended universities to learn more about Sport courses and there is often the opportunity to take part in an outdoor activities trip.

Level 3 Sport students have their own Walton High PE Kit that they will be expected to purchase on the enrolment day in August. Details of the cost can be obtained from the PE department.

For more information, please contact Miss Lancaster at Walnut Tree or Mr Cowie at Brooklands.

One Year Courses



Extended Project Qualification (EPQ).....	Level 3	39
Food Science & Nutrition.....	Level 3	40
Mathematical Studies.....	Level 3	41

EPQ

Level 3

Exam Board: AQA



Extended Project Qualification involves conducting research in almost any area which the candidate chooses. Students will have taught sessions which cover a range of research and presentation skills. These taught skills include: organisation and planning, problem solving, credibility, editing reports, presentation skills and public speaking, copyright and plagiarism, evaluating research, interviews, surveys and questionnaires, interpreting graphs, charts and data, using the library and the internet and referencing. The course is highly regarded and is an appropriate fourth choice for any candidate wishing to proceed into higher education.

Course Content

Candidates have a choice of producing a long report, artefact or live production as an Extended Project. However, all projects must be accompanied by a research report, presentation and fully completed production log. The course covers aspect such as time management, essay writing, research skills, referencing and presentation skills. This course is equivalent to more than half an A level and candidates can receive UCAS points for this qualification and may receive an improved university offer with this qualification.

Types of project which you can undertake:

- ◆ **A research report** (e.g. a written report of length appropriate to the level of project – including scientific based reports).
- ◆ **A production** (e.g. charity event, fashion show, sports events etc).
- ◆ **An artefact** (e.g. a piece of art, a computer game, a realised design).

The project should demonstrate 120 work hours and you will attend timetabled sessions each week to be taught the skills you need to complete the project.

Exam Structure

The assessment is holistic; candidates must submit a written report, evidence of project outcome, presentation and a completed production log.

Which Doors Will Be Opened?

This course is relevant for all students who wish to further their studies or enrich their knowledge in an area of interest.

Quotes regarding EPQ from various universities:

- ◆ **Cambridge University:** “We welcome the introduction of the Extended Project and would encourage students to undertake one.” - Dr Geoff Parks - Director of Admissions 2009.
- ◆ **University of Nottingham:** “We welcome the introduction of the Extended Project and will encourage you to undertake one as it will help you develop independent study and research skills” - University of Nottingham Undergraduate Prospectus 2012, p.280.

For more information, please contact Mrs Penaligon at Walnut Tree or Miss Clarke at Brooklands.



Food Science & Nutrition

Level 3 Certificate
Exam Board: WJEC



An understanding of Food Science and Nutrition is relevant to many industries and job roles. Care providers and nutritionists in hospitals use this knowledge, as do sports coaches and fitness instructors. Hotels and restaurants, food manufacturers and government agencies also use this understanding to develop menus, food products and policies that support healthy eating initiatives. This course is a mix of both practical based skills and theoretical aspects of food science, nutrition and food safety. Students will be given the chance to improve and develop their culinary skills.

Course Content

Mandatory unit: Meeting Nutritional Needs of Specific Groups

The purpose of this unit is to develop understanding of food safety, nutrition and nutritional needs in a wide range of contexts, and through on-going practical sessions, to gain practical skills to produce quality food items to meet the needs of individuals.

Learning outcomes:

- ◆ To understand the importance of food safety
- ◆ To understand properties of nutrients
- ◆ To understand the relationships between nutrients and the human body
- ◆ To be able to plan nutritional requirements for different groups of people
- ◆ To gain experience using any industry standard kitchen
- ◆ To develop food practical skills and finishing techniques

Exam Structure

This course consists of 50% formal examination and 50% coursework. The exam is 90 minutes long.

Which Doors Will Be Opened?

This qualification will open doors to the food industry or hospitality industry on a vocational route and also will allow university entry, some examples of suitable degrees include:

- ◆ BSc Food and Nutrition
- ◆ BSc Human Nutrition
- ◆ BSc (Hons) Public Health Nutrition
- ◆ BSc (Hons) Food Science and Technology

Throughout the course, students will be working with experts from the following areas of the working world:

- ◆ Environmental Health Departments
- ◆ NHS professionals
- ◆ Catering managers
- ◆ Contract catering organisations
- ◆ Charities that provide food to service users
- ◆ Hotels and restaurants
- ◆ Food production organisation

Extras

Students have the opportunity to access a range of enrichment including Advanced Learning Days, after school events and trips. These include chef demonstrations, visits to local businesses and planning their own events. Students also have the opportunity to become student ambassadors for the subject. This means that they can represent their subject at various school events such as Information Evenings.

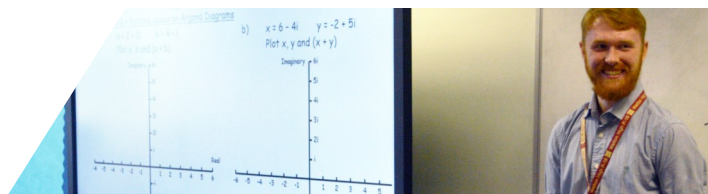
For more information, please contact Mr Kanengoni at Walnut Tree or Mrs Millar at Brooklands.



Mathematical Studies

Level 3

Exam Board: AQA



Mathematical Studies aims to prepare students for the mathematical demands of higher education and work where there is a distinct mathematical or statistical element, but where the mathematical demands do not stretch to a requirement for A level Mathematics.

This Level 3 qualification will consolidate students' mathematical understanding, build their confidence in applying mathematical techniques to solve a range of problems and introduce them to new concepts that will prepare them for further study or employment. This course will give students the equivalent of half an A level and therefore will only be appropriate as a fourth choice.

Course Content

Students develop a more advanced understanding of statistics, financial maths and modelling – for example, understanding investments, analysing trends in population growth or calculating new ways to improve a process. There will also be an emphasis on using maths in a business setting.

The course is split into two papers consisting of the following units:

Paper 1 - Compulsory content:

- ◆ Analysis of data
- ◆ Maths for personal finance
- ◆ Estimation

Paper 2 - Compulsory content:

- ◆ Critical analysis of given data and models

As well as a choice of one of the following:

- ◆ Statistical Techniques
- ◆ Critical Path and Risk Analysis
- ◆ Graphical Techniques

Exam Structure

Mathematical Studies is assessed by exam only. It is designed to be taken over one year with both exams taken at the end of the course.

Support

Mathematicians are encouraged to utilise the weekly support session run by Post 16 teachers at both Brooklands and Walnut Tree. This support session is dedicated to Year 12 students.

Which Doors Will Be Opened?

Mathematical Studies is designed to help students:

- ◆ Develop mathematical modelling, evaluating and reasoning skills.
- ◆ Solve substantial and real life problems encountered by adults.
- ◆ Use ICT as an explanatory tool for developing mathematical understanding and for solving numerical problems.
- ◆ Enjoy mathematics and develop confidence in using mathematics.

It is an ideal choice for those who wish to go on to studies that require or benefit from an element of mathematical skill without needing an A level in Mathematics.

Such subjects might include Psychology, Sciences, Geography, Business and ICT as well as technical and vocational qualifications.

Extras

Students will have the opportunity to join a Maths Club where problem solving will be the focus.

For more information, please contact Mr Griffin or Mrs Wilson at Walnut Tree or Mr Riccardo at Brooklands.



Provisional Post 16 Option Blocks

	1	2	3	4	5	
A Level Programme	Chemistry	Business Studies	Accounting	Ancient History	French	English/Maths GCSE Resit
	Economics	English Literature	Biology	Biology	Law	
	Psychology	Mathematics	Further Maths	English Language	Mathematics	
	Religion, Philosophy and Ethics	Sociology	Geography	Law	Media Studies	
	Computer Science		History	Music	Politics	
			Psychology	Physics	Psychology	
					Spanish	
	Applied Law				Applied Psychology	
Vocational Programme	Applied Science Diploma 1	Applied Science Diploma 2	Applied Science Extended Diploma			
	Art and Design Diploma 1		Art and Design Diploma 2		Art and Design Extended Diploma	
		Business Diploma 2	Business Diploma 1	Business Extended Diploma		
	CPLD Extended Certificate					
				Creative Media Diploma 1	Creative Media Diploma 2	
	Health & Social Care Extended Diploma	Health & Social Diploma 2	Health & Social Care Diploma 1			
	ICT Introductory Diploma					
	Performing Arts Extended Diploma	Performing Arts Diploma 2	Performing Arts Diploma 1			
	Sport Extended Diploma	Sport Diploma 2	Sport Diploma 1			
One Year Courses					Mathematical Studies AS Level	
				Food Science Certificate		
	EPQ	EPQ	EPQ	EPQ		

Please note:

- ◆ Students should take courses in **either** the Academic pathway or the Vocational pathways.
- ◆ Students should choose three or four courses each in a different option block. Students must have at least three Applied General/Technical courses or three A levels to take into Year 13.
- ◆ Students wishing to take a mixed programme will need to discuss this at their Information and Guidance interview.
- ◆ EPQ and Mathematical Studies may be taken by students following any pathway.
- ◆ Students taking Physics **must** also take Maths.
- ◆ Students taking A levels in Economics, Psychology, Geography, Business Studies, Biology or Chemistry who **are not** taking Maths A level are encouraged to take Mathematical Studies as an additional programme.



'The Post 16 environment seamlessly enables students to transition to their next steps, with its high levels of support and well-structured education programmes. When contemplating my future, I found myself overwhelmed with the different options presented to me. I decided that I wanted a degree but didn't wish to carry the hefty loan that comes with traditional university courses. I had a conversation with my tutor, where she showed me the option of Degree Apprenticeships giving me both the degree and financial stability I desired. My tutor and the Post 16 team then assisted me in the six-month long application process which resulted in me securing a place on the Network Rail Degree Apprentice scheme. This invaluable support from my tutor, subject teachers and Post 16 staff has enabled me to start my apprenticeship prepared and confident.'

Theo Summerfield, Network Rail Degree Apprentice Scheme



**Walton High
Walnut Tree Campus**

Fyfield Barrow
Milton Keynes
MK7 7WH

T| 01908 677954
E| feedback@mket.org.uk
W| www.waltonhigh.org.uk



**Walton High
Brooklands Campus**

Fen Street
Milton Keynes
MK10 7HE

T| 01908 677954
E| feedback@mket.org.uk
W| www.waltonhigh.org.uk